

ZEELAND CHARTER TOWNSHIP

COMMUNITY PARKS AND RECREATION PLAN

2024-2029 // ADOPTED **XX.XX.2024**



320 E Main Zeeland, MI 49464
p 616.748.3230

DRAFT

**ZEELAND
CHARTER
TOWNSHIP**

6582 Byron Rd, Zeeland, MI 49464
p 616.772.6701

Prepared By

TowerPinkster

Architecture · Engineering · Interiors

4 East Fulton Street, Suite 200
Grand Rapids, MI 49503
towerpinkster.com
p 616.456.9944 // f 616.456.5936

ACKNOWLEDGEMENTS

DRAFT

Community Members of Zeeland Charter Township

Thank you for your support and use of our parks and recreation system. Your engagement continues to make a meaningful impact on our community!

Zeeland Charter Township Board of Trustees

*Tom Oonk, Township Supervisor
Kate Kraak, Clerk
Melissa Veldheer, Treasurer
Jeff Salisbury, Trustee
Kerri Bosma, Trustee
Ron Brink, Trustee
Mike Riemersma, Trustee*

Planning Consultants

Towerpinkster, inc.
*Brandon List, LA, Project Manager
Laura Fredrickson, Landscape Architect
Tom Jandernoa, Landscape Designer*

TABLE OF CONTENTS



TABLE OF CONTENTS

DRAFT

01	EXECUTIVE SUMMARY	3
	Introduction	3
02	COMMUNITY DESCRIPTION	6
	Plan Jurisdiction	6
	Surrounding Community	6
	Community Profile	8
	Natural Resources	11
	Significant Transportation Networks	12
	Additional Information	13
03	ADMINISTRATIVE STRUCTURE	17
	Governing Authority	17

TABLE OF CONTENTS

Parks & Rec Budget Funding Sources	17
Relationship With Other Local Entities	18
04 RECREATION INVENTORY	24
Overview	24
Accessibility Assessment	27
Park and Recreation Facilities Inventory Table	32
Park and Recreation Area Acreage Evaluation	33
Zeeland Charter Township Parks & Recreation Facilities	33
05 PLANNING AND PUBLIC INPUT PROCESS	44
Overview	44
06 GOALS AND OBJECTIVES	51
Overview	51
Shared Goals For All Plan Participants	51
Goal 1.	51
Goal 2.	52
Goal 3.	52
Goal 4.	52
Goal 5	53
07 ACTION PROGRAM	57
Overview	57
Capital Improvement Schedule	57
Actions	59
Capital Improvement Plan Schedule	59
08 APPENDIX	65



01

EXECUTIVE SUMMARY

EXECUTIVE SUMMARY

DRAFT

INTRODUCTION

Parks, recreation and open space are important elements of all communities and reflect positively on the quality of life for residents. In recent years, a more holistic approach to recreational planning has been encouraged, stretching beyond the boundaries of traditional parks to include sidewalks, linear trails, greenways, town squares, plazas, school grounds and other publicly and privately owned lands. A variety of indoor facilities also serve the recreational and social needs of the public. Recreation programming strives to improve the quality of life by providing a recreational outlet for the individuals to constructively use their leisure time. In addition to the human benefits of recreation and open space, there are also important environmental benefits; such as water resources protection, reduced vehicular traffic and plant and wildlife protection.

The Community Parks and Recreation Plan is a general, long-range development tool used to achieve and maintain a high park, recreation and open-space system. It evaluates the needs of the community and makes strategic recommendations for recreation, beautification and economic development to be implemented over the next five years.

The background of the entire page is a complex, low-poly geometric pattern. It consists of numerous triangles of varying sizes and shades of gray, creating a textured, crystalline effect. The colors range from light gray to dark charcoal gray.

02

COMMUNITY DESCRIPTION



COMMUNITY DESCRIPTION

DRAFT

PLAN JURISDICTION

This Community Recreation Plan covers the jurisdiction of Zeeland Charter Township, which resides on the west side of Michigan, positioned inbetween the cities of Grand Rapids and Holland. The geographic extent of this plan is limited to the political boundaries of Zeeland Charter Township, which is roughly a six mile by six mile square area. The City of Zeeland takes up a portion of this area, leaving Zeeland Charter Township with a total of 34.38 square miles of land. The City of Zeeland is not included in this plan's jurisdiction.

SURROUNDING COMMUNITY

Zeeland Charter Township resides within Ottawa County along the county's southern border. Immediately to the south of the Township, resides Allegan County. Zeeland Charter Township is adjacent to or immediately near the following municipalities:

WITHIN OTTAWA COUNTY

- The City of Zeeland [W]
- Holland Township [W]
- Olive Township [NW]
- Blendon Township [N]
- Georgetown Township [NE]
- The City of Hudsonville [NE]
- Jamestown Township [E]

WITHIN ALLEGAN COUNTY

- Salem Township [SE]
- Overisel Township [S]
- Fillmore Township [SW]

This plan does not apply to any of the listed entities or their boundaries, and does not cover their recreation needs.



Zeeland Area
Community Park and Recreation Plan 2024-2029

COMMUNITY PROFILE

HISTORY

Zeeland Charter Township was established in 1847 (10 years after Michigan became an official state) by a group of immigrants from the Netherlands fleeing religious and political persecution. The first residents originally came with a larger group of Dutch immigrants who established other cities, villages, and townships in the area around the same time, including the City of Holland. Because of this linked history, much of the region shares common celebrations, religious affiliations, and family ancestry. Zeeland Charter Township continues to regularly celebrate this Dutch heritage as part of its historical identity.

Prior to settlement, the region was part of the territory of the Anishinaabe nations, which included the Ottawa, Ojibwe, and Potawatomi tribes. These three tribes together are referred to as the Council of Three Fires and they shared the Algonquian language. Their influences and history hold an important place in the narrative of the community.

DEMOGRAPHICS

POPULATION

The township has grown to a population of 12,008 residents as of the 2020 census. This represents a 20.43% increase from its 2010 population, with an average annual growth rate of about 1.88%. While this represents a higher average growth rate compared to the surrounding county (which experienced the highest rate of any county in the state in the same period), Zeeland Township's annual growth rate appears to have slowed down relative to the 90's. Between 1990 and 2020, the growth rate has slowed each decade from 5.46% annually (70.2% over 10 years) between 1990 and 2000, to 2.74% annual (31.0% over 10 years) from 2000 to 2010, to 1.88% (20.43% over 10 years) from 2010 to 2020.

Table 2.1: U.S. Census Data - Population Totals

2010	2020	Percent Change
9,971	12,008	20.43%

The township has an average density of 349.3 people per square mile. However, the population is unevenly distributed throughout the township, with higher density regions weighted to the west side of the township near adjacent urban areas.

INCOME

The median household income in the township is about \$99,455, which trends above national and state averages [\$74,580 (U.S. Census Bureau 2022 Current Population Survey) and \$63,202 (2017-2021 American Community Survey)], respectively.

RACE AND ETHNICITY

The racial makeup of the township is predominately White, making up approximately 87.8% of the population. While the last decade has generally seen minimal shifts in racial composition within each race category, the overall racial composition of the township has seen a 7.2% swing towards increased diversity overall. The largest increase has occurred within the Asian demographic, contributing 4.9 percentage points of the 7.2% change.

Table 2.2: U.S Census Data - American Community Survey 5-Year Estimates - Race

Race	2010*	2020*	Percent Point Change
White	95.0	87.8	-7.2%
Black or African American	0.1	0.4	0.3%
American Indian and Alaska Native	0.0	0.2	0.2%
Asian	0.4	5.3	4.9%
Native Hawaiian and Other Pacific Islander	0.0	0.0	0.0%
Two or More Races	2.3**	3.6**	1.3%
Some Other Race	2.1	2.6	0.4%
% of Total as Hispanic or Latino (any race)	8.3	7.2***	

*Rounding results in percentage totals equaling 99.9% rather than 100%.

** 2010: includes 0.3% Black or African American with others and 0.1% American Indian and Alaskan Native with others; 2020: Includes 0.6% of Black or African American with others and 1.3% of Asian with others.

*** The 2020 % of Total as Hispanic or Latino (any race) value is coincidentally the same as the change in overall White percentage. These values are not related.

AGE

The township's population distribution is heavily weighted towards youth and family/career-aged adults, with around two-thirds of the total population being within those two groups. The empty nester age-range is also significant at just under a quarter of the total population. The age distribution drops sharply after retirement.

Table 2.3: U.S Census Data - American Community Survey 5-Year Estimates - Age							
Age Group	Age Range [years old]	2010 [%]	Grouped	2020 [%]	Grouped	Population Shift [%]	Change
Youth	< 5 to 14	9.2	33.4	5.1	31.4	- 4.1	- 2.0
	5 - 9	7.8		7.7		- 0.1	
	10 - 14	8.5		11.3		+ 2.8	
	15 - 19	7.9		7.3		- 0.6	
Family / Career Aged	20 - 24	6.3	35.6	7.1	34.2	+ .8	- 1.4
	25 - 34	13.5		8.0		- 5.5	
	35 - 44	15.8		19.1		+ 3.3	
Empty Nesters	45 - 54	13.0	23.8	14.2	23.9	+ 1.2	+ 0.1
	55 - 59	6.1		4.7		- 1.4	
	60 - 64	4.7		5.0		+ 0.3	
Retirees + Elderly	65 - 74	4.3	7.2	6.9	10.6	+ 2.6	+ 3.4
	75 - 84	2.0		3.0		+ 1.0	
	85 +	0.9		0.7		- 0.2	

The age distribution of the township has remained relatively stable over the last decade, with limited to modest growth in some age brackets, and limited to modest reductions in others. While the direct causes of these shifts can't be explicitly identified through the numbers, it is possible that one influence is simply that the population has aged as a whole. When grouped into broad categories, this becomes more apparent: there is a small shift in the population towards the older age groups, with the largest decreases and increases at both ends of the spectrum.

It is interesting to note that despite significant population growth over 10 years, the age distribution has remained relatively stable - in essence, the age distribution of new residents has generally fallen in line with the age distribution of existing residents.

LAND USE

The township is rural in character, with a majority of the land in agricultural production and a smaller portion of more concentrated development to the west, closer to the City of Zeeland. This pattern of urban concentration to the west has helped to preserve much of the agricultural lands in the north, east, and south. A large natural area occupies significant acreage in the center of the township. Some of the area surrounding the western development includes suburban neighborhoods.

Zeeland Township has a diverse industrial base, including production of agricultural goods, perennial plants, wood products, processed foods, plastic extrusion and drawn metal stamping. And while agriculture represents a significant land use and an important industry, the township resides in an ideal location within the region to allow residents to find employment within nearby urban areas, creating opportunities for employment and commerce beyond its borders.

NATURAL RESOURCES

Zeeland Charter Township has a generally flat landscape, with some areas of rolling hills. Topographic variation is generally influenced by rivers and drains, including the Macatawa ridge. There are no major lakes located within the township, though wetlands are common throughout. The township is within the Macatawa Watershed, which drains into Lake Macatawa beyond the borders of the township to the west.

The most significant water course within the township is the Macatawa River, originally called the “Black River” in the Algonquian language. People today still often refer to it as the “Black River.” The original language was only spoken and not written, which led to the mis-phoenetisization of the word to what we now write as “Macatawa.” The Macatawa River has significant importance relating to the heritage of the Anishinaabe nations.

Zeeland Township overlaps with the middle section of the river, which has been significantly altered by human activities over time. The majority of the water course has been straightened or artificially guided through the township. The majority of the river within the township has been straightened and channelized over time, with the river returning to a more natural state at Poppen Woods in the south west corner of the township. The river is navigable through many stretches, with it becoming smaller and less accessible further to the north and east, beyond the township. This body of water offers many recreational opportunities.

Zeeland Charter Township contains a number of natural areas surrounding the Macatawa River, the most significant being preserved within what is known as the “Upper Macatawa Natural Area”. The largest contiguous natural area within the township resides in the middle of the township with a string of smaller parcels of land continuing south and west along the Macatawa River. These natural areas are part of the larger regional effort referred to as the “Macatawa Greenway,” which seeks to create a contiguous connected network of natural areas along the Macatawa River. This greenway effort is a collection of private and public lands owned and managed by various entities, including: Outdoor Discovery Center Macatawa Greenway (non-profit), Ottawa County Parks and Recreation Commission, City of Holland, Zeeland Charter Township, Holland Charter Township, and Park Township.

SIGNIFICANT TRANSPORTATION NETWORKS

ROADS AND RAILWAYS

Regional access to Zeeland Charter Township is provided along U.S. 31 and I-196. These highways service the neighboring cities of Grand Rapids (and it's metro area), Grand Haven, Holland, Muskegon, and Saugatuck (among others). U.S. 31 provides north/south transportation along the Lake Michigan shoreline. I-196 runs from Grand Rapids southwest along the Lake Michigan shoreline connecting to I-94, the primary route between Detroit and Chicago. State highways serving the area include M-121 (Chicago Drive) in the south of the service area and M-45 (Lake Michigan Drive) in the north.

Zeeland Charter Township consists primarily of county roads, but is bisected by I-196 through it's middle. Chicago Drive [M-121] parallels I-196 to the north and provides a major transportation connection locally throughout the township and to outlying areas. A CSX railway follows Chicago Drive from east to west until it reaches the west side of the township.

This transportation infrastructure allows for a significant volume of travelers and industry to find their way into and out of Zeeland Charter Township. The infrastructure also connects many of the regional residents to important resources in the area, including the Macatawa Greenway, Lake Michigan, and the larger urban centers.

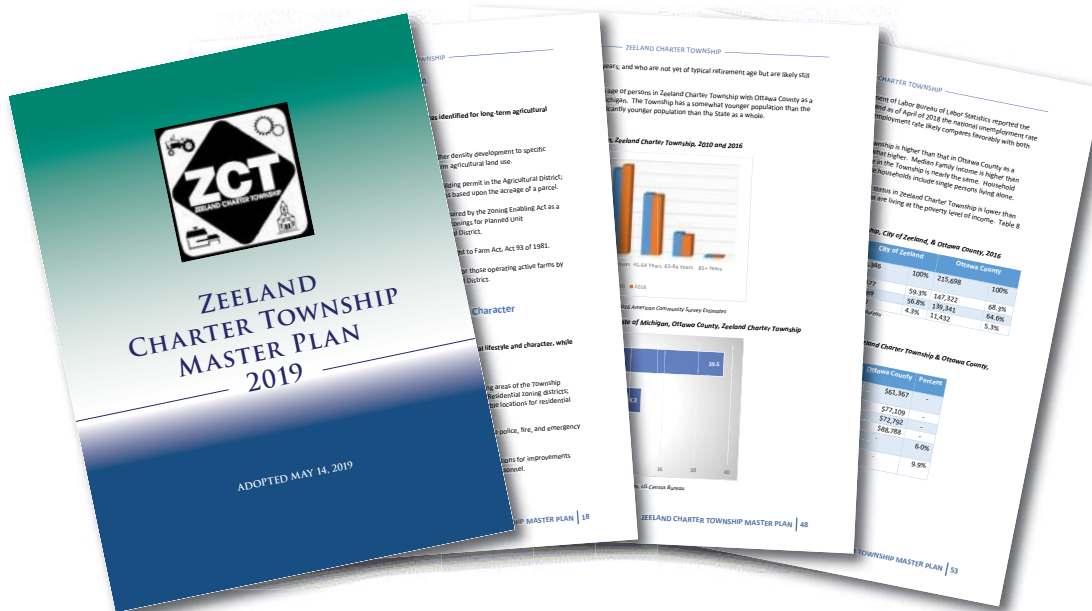
NON-MOTORIZED PATHS

Zeeland Township has developed a series of intra-township trails that connect to important locations within the township, such as the various county, private, and township owned parks, various neighborhoods, and the area schools. The trail network also provides a direct connection to various regional trail networks, which stretch beyond

Grand Rapids to the east, and up and down the coast line of Lake Michigan to the west. These trails provide access to some of the state's most valuable recreational resources.

ADDITIONAL INFORMATION

For more information about Zeeland Charter Township's resources, history, overall makeup, and future outlook, consult the 2019 Zeeland Charter Township Master Plan at [https://www.zeelandtwp.org/Portals/0/Master%20Plan%202019/ZeelandCharterTwp MasterPlan Final 190601.pdf?ver=SY_L004PH3DjDkLP7KQXZw%3d%3d](https://www.zeelandtwp.org/Portals/0/Master%20Plan%202019/ZeelandCharterTwp%20MasterPlan%20Final%20190601.pdf?ver=SY_L004PH3DjDkLP7KQXZw%3d%3d).



03 ADMINISTRATIVE STRUCTURE



***Zeeland Charter Township
Parks & Recreation Organizational Chart***

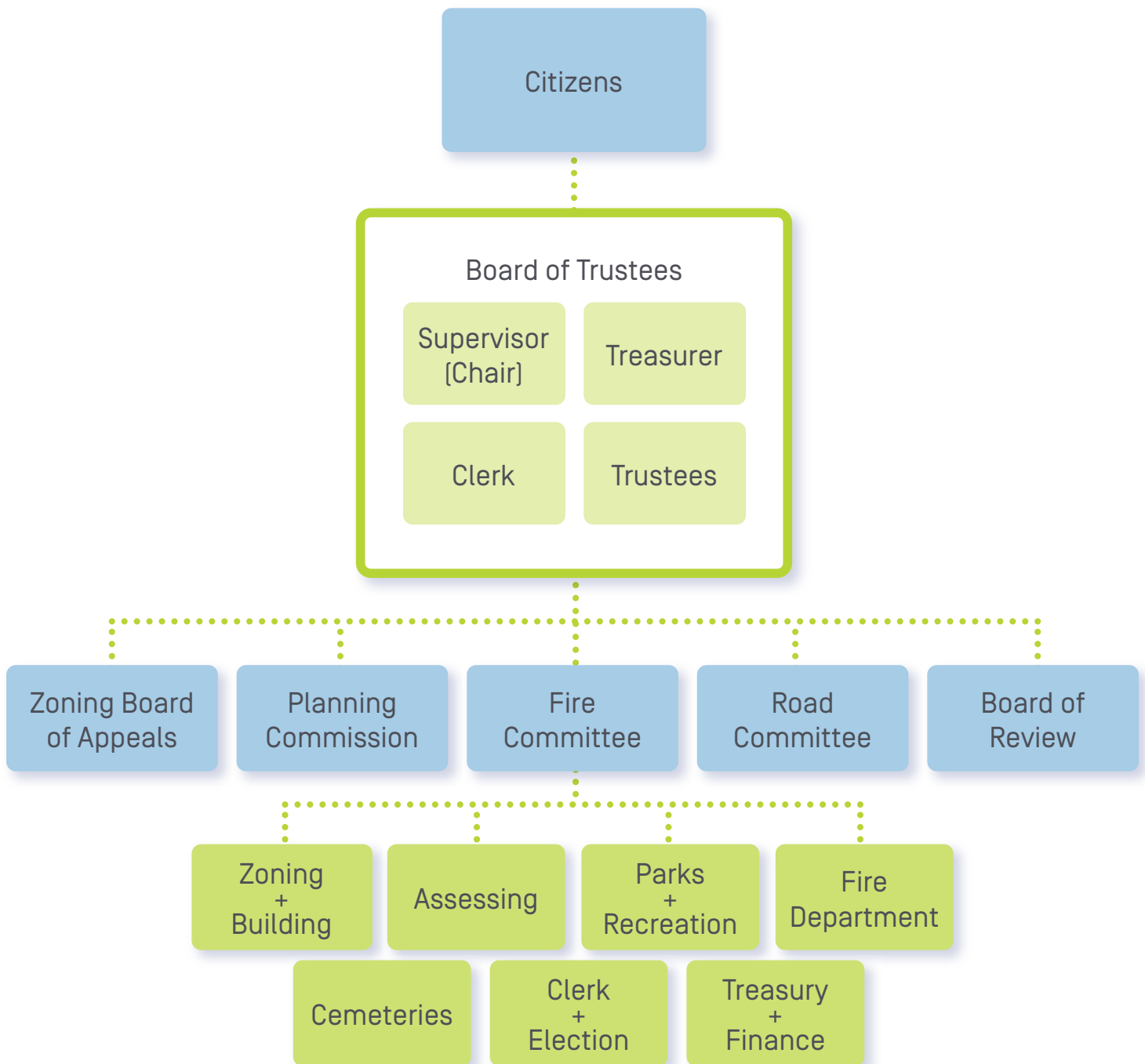


Figure 1: Zeeland Charter Township Parks & Recreation Organizational Chart

ADMINISTRATIVE STRUCTURE

DRAFT

GOVERNING AUTHORITY

The following identifies the administrative structure for Zeeland Charter Township. It also describes the functions regarding parks and recreation for the township.

Zeeland Charter Township is a charter township of Ottawa County, Michigan, authorized for incorporation under The Charter Township Act 359 Of 1947 and is authorized to provide parks and recreation services under this law and does not maintain a separate parks and recreation department.

The Township is governed by the Board of Trustees, which is composed of seven members. The Board consists of the Supervisor, Clerk, Treasurer, and four Trustees. All members are elected to four-year terms occurring at the general November election in the presidential election years. The planning commission is an advisory body to the board of trustees. Township parks and recreation functions are indirectly managed by the board of trustees. Parks are directly managed by the board of trustees. The Township Supervisor is the acting “Parks Director” and they provide administrative oversight of parks and recreation. The Clerk and Treasurer provide direct support to the Supervisor for scheduling, rentals, and finances. Several part time staff are employed to provide maintenance for the park facilities. Holland Township has been contracted to provide maintenance for the township’s regional bike path network.

The Board is responsible for adopting ordinances and the annual budget, appointing other boards, commissions and committees, and hiring Township employees. The Board oversees the installation and management of the following departments, boards, committees, commissions, functions, and offices:

PARKS & REC BUDGET FUNDING SOURCES

The following is the current year and projected annual budgets for Zeeland Township's parks and recreation system for operations, maintenance and capital improvements. This covers park property and trails. Parks and recreation functions are funded directly through the Township’s general fund. Revenue is primarily generated through taxes, with a small percentage generated from facilities rentals.

A copy of the overall township budget is available in the appendices.

Parks and Recreation Budget

	2024 Actual	2025 Budget	2026 Budget	2027 Budget	2028 Budget	2029 Budget
Capital Improvements	\$1,650,000	\$105,300	\$2,195,400	\$591,200	\$-	\$-
Maintenance, Repairs, and Replacement	\$723,300	\$551,500	\$575,200	\$325,800	\$129,500	\$129,500
Totals	\$2,373,300	\$656,800	\$2,770,600	\$917,000	\$129,500	\$129,500

RELATIONSHIP WITH OTHER LOCAL ENTITIES

ZEELAND REC (ZEELAND PUBLIC SCHOOLS)

Zeeland Rec is the area's regional recreation provider. The organization is a department of the Zeeland Public School District and its service area follows the boundaries of the district. Zeeland Charter Township lies completely within Zeeland Rec's service area. Community members within Zeeland Charter Township regularly participate in and enjoy the services provided by Zeeland Rec.

While Zeeland Rec operates its own facilities through the school district, it also partners with local entities, using their facilities in order to expand its capacity and reach. Zeeland Charter Township has welcomed this relationship and works closely with Zeeland Rec to program the Township's parks. Specifically, Zeeland Rec provides fee based programming at Drenthe Community Grove Park such as softball and flag football. In this respect, Zeeland Rec is the Township's primary recreation programming provider. In additional programming assistance, Zeeland Rec has provided funding assistance for upgrades to Drenthe Grove Community Grove Park.

The Recreation Board assists in the strategic planning for the Community Recreation program. The Board is designed to have members representing a variety of community interests including government, public/Christian schools,

OTTAWA COUNTY

Ottawa County maintains and operates their own parks within the township and maintains a meaningful presence with the township's residents. However, the relationship between Ottawa County Parks and Recreation and Zeeland Charter Township Parks & Rec is only neighborly and no formal agreements or partnerships exist between the entities.

HOLLAND CHARTER TOWNSHIP

Holland Charter Township is immediately adjacent to Zeeland Charter Township and provides neighboring community



**ZEELAND
CHARTER
TOWNSHIP**

members access to its facilities and programs. The two townships exist as good neighbors to one another, but do not generally share or partner in parks and recreation functions. The only formal relationship that exists between the two entities is a maintenance contract for Holland Charter Township to maintain the bike path network within Zeeland Charter Township. Coordinated planning does happen between the two entities in order to connect the regional trails together at the borders of their jurisdictions.

CLUBS, VOLUNTEERS, AND OTHER ORGANIZATIONS

DRENTHÉ GROVE PARK ASSOCIATION

The Drenthe Grove Park Association (DGPA) is a volunteer committee consisting of private individuals. The role of the DGPA is to provide vision for what they believe the park should look like and work with the township board to suggest improvements.



This committee has its origins as the original managing body over Drenthe Grove Park when it was part of a neighborhood association. As the use and scale of the park outgrew the association's resources and capacity, the park was turned over to the Township to own and operate while the committee maintained its presence and influence over the park's activities and future development.



Image of Zeeland Recreation adult sports programs.

04 RECREATION INVENTORY



RECREATION INVENTORY

DRAFT

OVERVIEW

PURPOSE

The recreation inventory is necessary to determining the recreational needs for the Zeeland Charter Township Area. The intent is to allow the Township to assess the existing facilities and evaluate the variety of programs, events, and existing recreational opportunities offered to the residents, and identify where there may be openings for new recreational opportunities. Zeeland Recreation and Zeeland Charter Township provided information for the inventory, and Tower Pinkster performed site inspections as part of the planning process. The inventory should be continually updated as renovations and additions occur to maintain an up-to-date list.



PARK AND OPEN SPACE CLASSIFICATION

This plan uses the recreation and open space classification system as recommended in Michigan Department of Natural Resources Guidelines, adapted from “Park, Recreation, Open Space and Greenway Guidelines,” (J.D. Mertes and J.R. Hall, 1995). The principal planning units used are described below.

Table - NRPA Recommended Classification System for Local and Regional Recreation Open Space and Trails

Classification	General Description	Location Criteria	Size Criteria
Mini-Park	Mini-parks are small, specialized recreation areas that address limited, isolated or unique recreational needs for a small population or specific group of residents.	The service area of a mini-park is less than a ¼ mile radius in residential setting.	The park size is typically between 2500 sq. ft. and one acre in size.
Neighborhood Parks	Informal active and/or passive recreational activities, such as field games, court games, playground equipment, and picnicking are the main focus of neighborhood parks. They remain the basic unit of the park system that serves as a recreational and social facility of a neighborhood.	Typically serves a residential area of ¼ to ½ mile distance.	A size of 5-10 acres is considered optimal for this type of park.
Community Park	Parks that serve a broader purpose than a neighborhood park are considered community parks. They should be easily accessible throughout their service area by interconnecting trails, and provide a range of facilities with a focus on meeting community-based recreation needs, as well as preserving landscapes and open spaces. Facilities may include picnic shelters and grills, wooded or open areas with access to nature, bike or hiking/walking trails, and other uses for large groups of people. They may also contain unique recreational facilities such as community centers, lighted ball fields or baseball diamonds, and swimming pools.	Determined by the quality and suitability of the site. Usually serves two or more neighborhoods and 1/2 to 3 mile distance.	These areas are typically between 30 and 50 acres in size.

Classification	General Description	Location Criteria	Size Criteria
Natural Resource Area	<p>Natural Resource Areas are lands set aside for preservation of significant natural resources, landscapes and open space. These sites are typically unsuitable for development but offer natural resource potential and can support recreational activities at a level that preserves the integrity of the natural resource.</p> <p><i>*Zeeland Charter Township has Van Zoeren Woods. The Macatawa Nature Area, and Poppen Woods are also in the township and operated by Ottawa County</i></p>	The location of these parks are largely governed by availability.	Dependent on availability.
School Park	Depending on the circumstances, combining parks with schools can fulfill space requirements for other types of parks, such as neighborhood or community parks. A single school could serve several of the above capacities. Size and location are important factors, and a School-park should meet the criteria described above for Neighborhood and Community Parks as a guide.	The criteria established for Neighborhood and Community Parks should be used to guide development.	Variable – depends on function.
Connected Trails	Linear parks or multi-purpose shared use trails that serve as safe, non-motorized connectors for pedestrians to and from neighborhoods, parks, recreation and natural resource areas, schools and other destinations.	Typically located within the road right-of-way	Variable.
Regional Park	Land that has been put into preservation to maintain the natural beauty or environmental significance, that provides a recreational use or is of historical or cultural interest.	Serves several communities within a one hour drive	Optimal size is 200+ acres, but varies based on use.

ACCESSIBILITY ASSESSMENT

Complying with accessibility standards and planning for universal design are two extremely important efforts that a municipality must undertake in its effort to protect the health, safety and welfare of its people. This is true not only for those disabled by birth or by accident, but also for the growing population of people entering old age who are finding normal tasks more and more challenging to do. Many able-bodied persons forget that disability is often an eventuality as one grows older. Therefore, Zeeland Charter Township should seek to improve the accessibility of its environment not simply to comply with law, but to think more broadly and take steps towards developing a compassionate, inclusive, and accessible community, unencumbered by physical barriers.

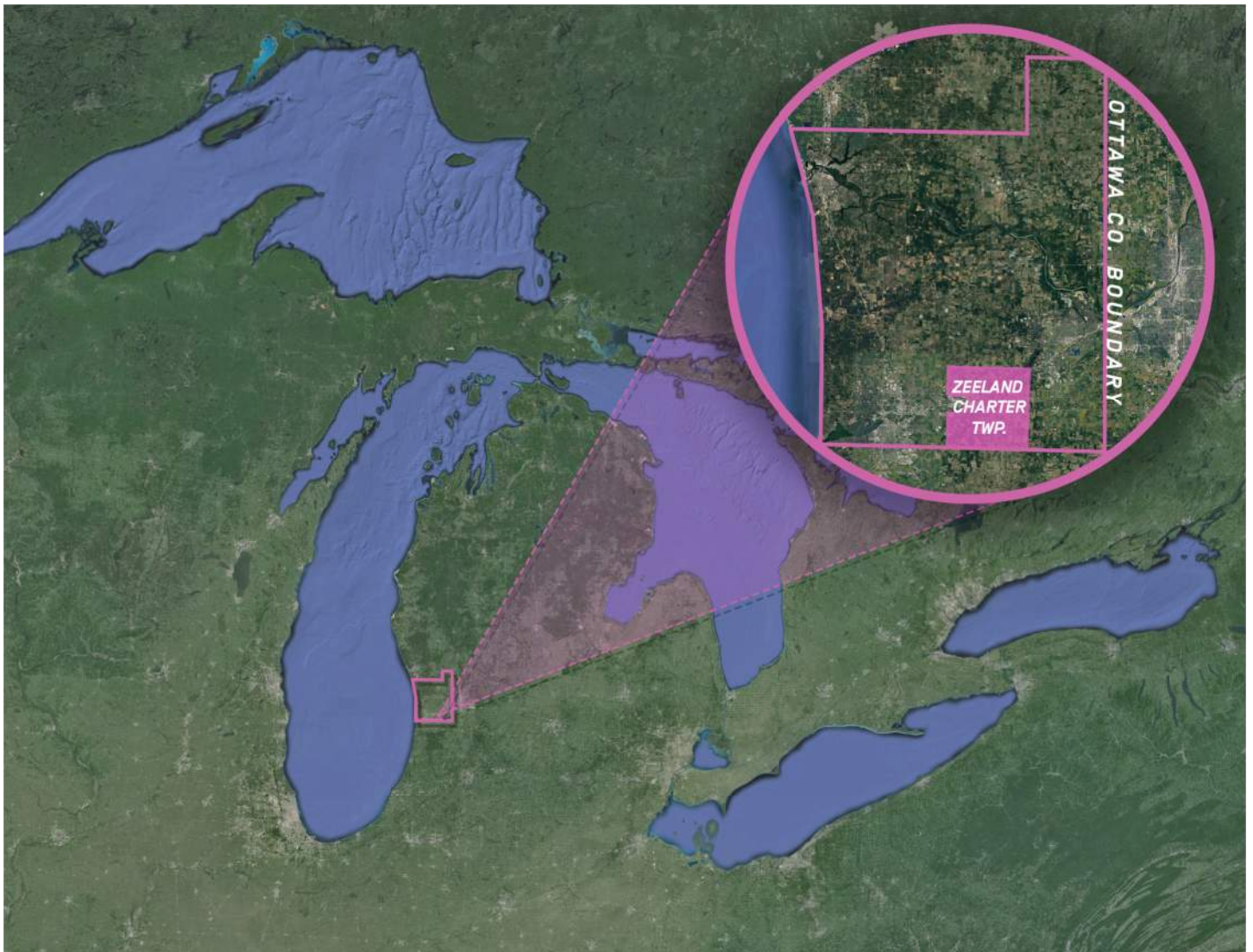
This plan rates the accessibility of its existing park facilities themselves. This rating system is from the Michigan DNR's guidelines for recreation plans. It is intended to establish a baseline so that accessibility needs can be assessed and incorporated into capital improvement projects. This evaluation is not comprehensive and does not identify specific deficiencies.

The following ranking system was applied to each park:

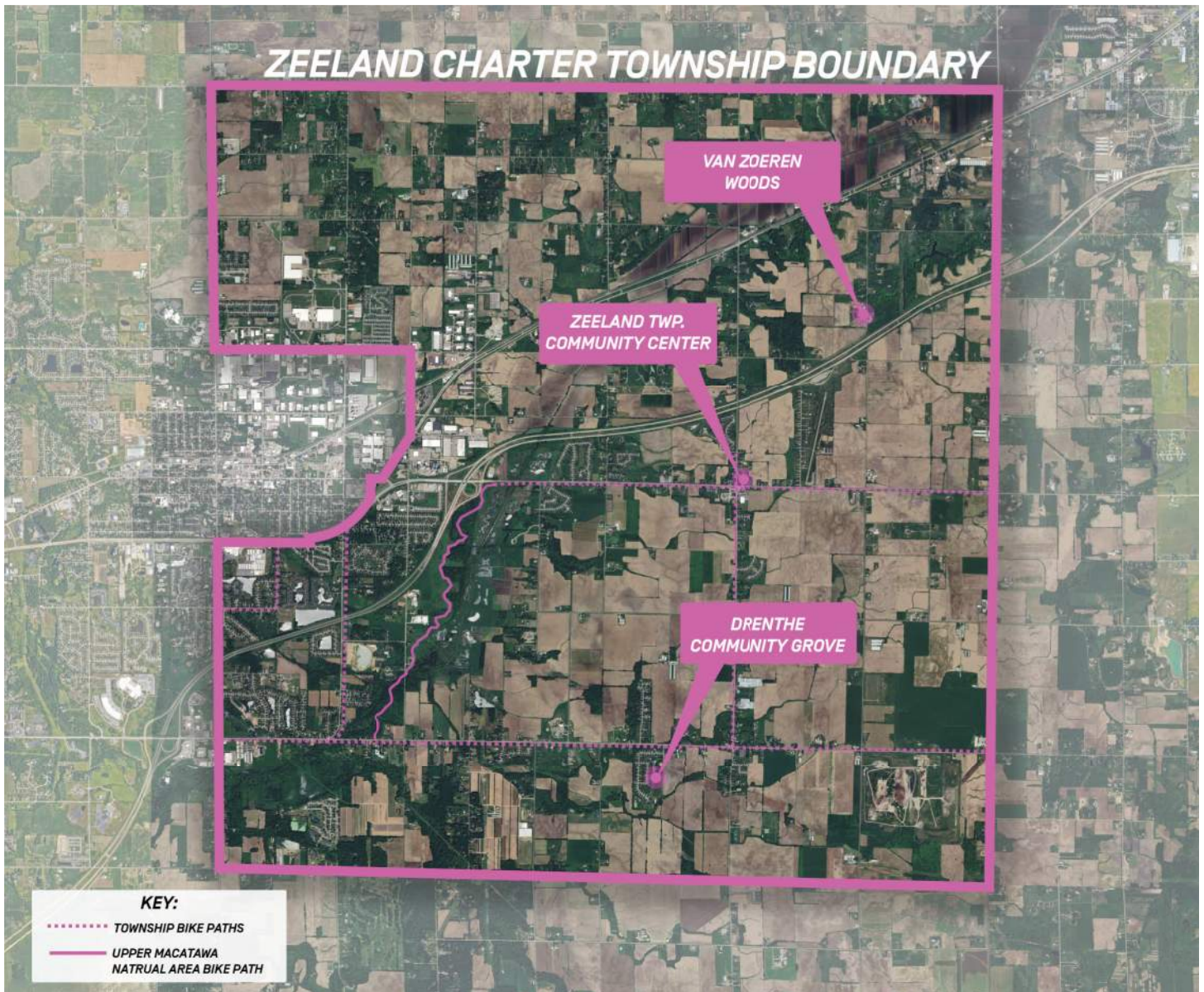
- 1 = none of the facilities/park areas meet accessibility guidelines.
- 2 = some of the facilities/park areas meet accessibility guidelines.
- 3 = most of the facilities/park areas meet accessibility guidelines.
- 4 = the entire park meets accessibility guidelines.
- 5 = the entire park was developed/renovated using the principals of universal design.

ACCESSIBILITY EVALUATION METHODOLOGY

In 2024, on-site accessibility assessments were coordinated by two landscape architects from TowerPinkster at each of Zeeland Charter Townships Parks and Recreation facilities. Facilities were inspected using the Americans with Disabilities Act Checklist [ADAchecklist.org] which is based upon the 2010 Accessibility Standards for Accessible Design. This checklist helps to ensure that all facilities are in compliance with ADA design standards and that each facility includes accessible features such as parking, entrances, routes and pathways, restrooms, seating areas, and more. Utilizing this checklist not only helps Zeeland Charter Township take inventory of the accessibility barriers currently faced at each site, but also provides an opportunity for the organization to make informed decisions for future recommendations and planning efforts.



Aerial image to demonstrate context of Zeeland Charter Township in the State of Michigan and within the Ottawa County boundary.



Aerial image to demonstrate context of Zeeland Charter Township and parks and recreation facilities.



Quarter-mile walkability diagrams for Drenthe Community Park.



Quarter-mile walkability diagrams for Van Zoeren Woods.



Quarter-mile walkability diagrams for Zeeland Township Community Center.

PARK AND RECREATION FACILITIES INVENTORY TABLE

Facility Name	Acres	Linear Miles	Park Classification	Accessibility / Assessment	Ball Fields	Soccer Fields	Football Fields	Tennis Courts	Track & Field	Basketball Courts	Open Lawn	5-12 Play Structures	2-5 Play Structures	Swing Sets	Picnic Areas	Yard Games	Fishing Access/Pier	Boat Launch	Shelter/Pavilion	Kitchen Facilities	Restroom Building	Bike Racks	Site Amenities (Benches, Etc)	Historical/Monument	Parking Area	Paved Shared-use Path	Unpaved Trail
Drenthe Grove	20		CP	3	1	•	•	2		2	•	•		•	•		•		2	•	•	•	•	•	•	•	
VanZoeren Woods	34		NR	2							•	•	•		•				1		•		•		•		•
Community Center Playground	1.5		NP	2							•		•	•	•				•	•	•		•		•		

NOTES:

MP = Mini Park, NP = Neighborhood Park, CP = Community Park, NR = Natural Resource Area, SC = Sports Complex, SU = Special Use, SP = School Park, CT = Connector Trail, • = Facility/Activity Present, # = Number of Facilities/Activities Present

Accessibility Assessment:

1 = none of the facilities/park areas meet accessibility guidelines.

2 = some of the facilities/park areas meet accessibility guidelines.

3 = most of the facilities/park areas meet accessibility guidelines.

4 = the entire park meets accessibility guidelines.

5 = the entire park was developed/renovated using the principals of universal design.

PARK AND RECREATION AREA ACREAGE EVALUATION

The following table evaluates current park acreage in the Township based on National Recreation and Parks Association (NRPA) recommendations. Although NRPA provides recommendations for parks and facilities they recognize that every community is unique and many factors should be considered when evaluating deficiencies and priorities. These additional factors can include age and income distribution, neighborhood structure, and recreation interests of your community, as well as the recreation opportunities available in nearby communities.

ZEELAND CHARTER TOWNSHIP PARK AND RECREATION AREA ACREAGE/POPULATION TABLE

	Total Park Acres	Population of Township	Acres / 1,000 People
Zeeland Charter Township	55.5	11,077	5.01

The National Recreation and Park Association recommends between 5.5 and 15.9 Acres/1000 people. As shown in the previous table, Zeeland Charter Township's park acreage falls slightly short of this range.

ZEELAND CHARTER TOWNSHIP PARKS & RECREATION FACILITIES

The following section provides more detailed information about the parks and recreation facilities that are owned and operated by Zeeland Charter Township and were assessed as part of the planning process:



DRENTH COMMUNITY GROVE

Drenth Community Grove and Ballpark is a 20-acre recreational area located at 615 68th Ave. The park has playground equipment, a ball field, two tennis courts, two basketball courts, three pickleball courts, a turf playing field, and shaded picnic areas open to the public. There is also a 0.7 mile paved walking path, fishing pond with platform and two picnic areas with a gazebo and a shaded pavilion. The Dozeman Center at Drenth Grove is an all-season community building that is available to rent. It seats approximately 150 people and has a refrigerator, freezer and stove, and toilet rooms.

STATISTICS

Type: Community Park

Size [acres]: 20

Accessibility Assessment: 3

Ideal for: Misc. Physical Activities, Fishing, Group Gatherings





DRENTH COMMUNITY GROVE PARK FEATURES:

- PLAYGROUND
- BASEBALL/SOFTBALL FIELD
- TWO TENNIS COURTS
- TWO BASKETBALL COURTS
- THREE PICKLEBALL COURTS
- TURF PLAYING FIELD
- GAZEBO AND SHADED PICNIC PAVILION WITH TABLES
- SHADED LAWN PICNIC AREA
- 0.7 MILE PAVED WALKING PATH
- FISHING POND WITH PLATFORM
- COMMUNITY BUILDING AVAILABLE TO RENT WITH TOILET ROOMS & KITCHEN
- PARKING LOT



0' 150' 300' 600' 1200'

SCALE: 1" = 300' - 0"



VAN ZOEREN WOODS

VanZoeren Woods is a 34-acre natural area located at the corner of 56th Avenue and Riley Street, just north of I-196. It has recently been renovated to add an improved parking lot at the trail head, as well as paved sidewalks that provide access to a new shaded picnic pavilion and a vaulted toilet room. This piece of land is unique in its timbered, gullied, wild flower resources that is great for bird watching. The park contains approximately 1.5 miles of existing unpaved, wooded hiking and walking trails, with several more walking trails planned for future development.

STATISTICS

Type: Neighborhood Park

Size [acres]: 34

Accessibility Assessment: 2

Ideal for: Outdoor and Nature Enthusiasts, Trail Hiking, Group Gatherings







ZEELAND CHARTER TOWNSHIP COMMUNITY CENTER

The Zeeland Charter Township Community Center is located at 2446 64th Ave., Zeeland, Michigan. The former fire station sits on a 1.5 acre property with a playground, shaded picnic pavilion, playing field and a community building. The building is available to rent. It seats approximately 70 people and has a kitchen with a refrigerator and stove, and toilet rooms.

STATISTICS

Type: Neighborhood Park

Size [acres]: 1.5

Accessibility Assessment: 2

Ideal for: Physical Activities for Young Children and Families, Group Gatherings





COMMUNITY CENTER FEATURES:

- SHADED AND PAVED PAVILION WITH PICNIC TABLES
- COMMUNITY BUILDING AVAILABLE TO RENT WITH TOILET ROOMS & KITCHEN
- PLAYGROUND
- PLAYING FIELD
- PARKING LOT



SCALE: 1" = 80' - 0"

DNR Recreation Grant Inventory

Zeeland Charter Township has received two grants from the Michigan Department of Natural Resources. The following is a summary of the grants received including the park where the improvements were made, the year of improvements, the MDNR grant number, the grant amount, the items listed in the project scope, and the project description. A copy of the grant history report can be found in the appendix of this document.

Park Name and Year: Drenthe Grove Park Improvements, 2001

Grant Number: 26-01590

Grant Amount: \$68,500.00

Scope Items: Pave access drive and parking [barrier free], pave barrier free walkway, equipment, tennis courts, other play court, handicap accessible picnic tables, landscaping, and restroom upgrades.

Project Description: Upgrade access, parking and recreational facilities, as well as provide additional recreational activities.

Park Name and Year: Drenthe Grove Park Expansion, 2003

Grant Number: TF03-070

Grant Amount: \$80,400.00

Scope Items: Acquisition Project

Project Description: Upgrade Acquisition in fee simple title of 13 acres adjacent to Drenthe Grove Park for future expansion of park and recreational opportunities. Parcel includes 0.6 acre wetland and 500' along Hunderman Creek.

05 PLANNING AND PUBLIC INPUT PROCESS



PLANNING AND PUBLIC INPUT PROCESS

DRAFT

OVERVIEW

The planning process for this recreation plan ran from July 2023 through March 2024. This plan was commissioned by Zeeland Rec as part of its commitment to the greater community to provide quality recreation services to the area. Zeeland Rec is a recipient of millage funding from the surrounding community and uses a portion of those funds to provide recreation planning on behalf of its service area. Zeeland Rec hired TowerPinkster to prepare this plan in partnership with the Planning Committee.

The planning process involved the following activities:

- Review prior recreation plans, adjacent community recreation plans, and other relevant planning documents, including the 2019 Zeeland Charter Township Master Plan
- Review current and past census data
- Inventory existing parks and recreation facilities
- Conduct community engagement
- Conduct an online survey
- Analyze potential community needs based on available planning data
- Revisit and update existing goals and objectives
- Review current planned projects and identify potential projects
- Estimate rough costs and project phasing of planned improvements
- Evaluate potential funding sources
- Provide 30 day community review and comment period
- Provide administrative review and approval by governing body

PLANNING COMMITTEE

In an effort to provide joint planning efficiencies for the area communities within its service area, Zeeland Rec reached out to each of the area municipalities that did not already have an active recreation plan to see if they wanted to be part of this plan. These entities included:

- Olive Township
- Blenden Township

- Georgetown Township
- Overisel Township
- Fillmore Township
- Zeeland Charter Township

Zeeland Charter Township chose to participate in this planning process. Tom Oonk, Zeeland Township's supervisor, joined the planning effort and provided guidance and input throughout the effort.

From August 2023 forward, the planning committee consisted of Brett Geertsma [Zeeland Rec], Tom Oonk [Zeeland Charter Township], and representatives from TowerPinkster, the planning consultant.

PLANNING PROCESS

The planning effort for synthesized information from two tasks: Parks Metrics Comparison and Systems Planning.

The first, Parks Metrics Comparison, looks at National Recreation and Parks Association data and draws comparisons that are intended to illuminate whether the parks and recreation system generally follows national averages for any given criteria [community population, jurisdiction type, etc]. The results of the comparison give a relative sense for how others parks and recreation systems are set up based on those criteria, but averages do not provide insight into specific needs and solutions and should only prompt further discussion.

The second, Systems Planning, takes a look at a mixture of opinion data along side various sources of planning data, and synthesizes the information into a cross-section of levels of service, priorities, and community issues. This information attempts to identify gaps that can be addressed with community-specific solutions. In coordination with the Parks Metrics Comparison data, this information helps create targets for future improvements.

EARLY PUBLIC INPUT

As part of the planning effort, a mixture of engagement opportunities were utilized to gather public opinion and user group sentiments.

- Community Input Event, October 10, 2023
- Online Community Survey, October 1, 2023 through December 31, 2023

COMMUNITY INPUT EVENT SUMMARY

A Community Input Event was held at Drenthe Grove Park at the community building in the evening of October 10, 2023. The event provided a series of exhibits that each had some form of interactive element, requesting input on specific questions. The boards used for this are included in the appendices. These exhibits included: regional park maps, regional trail maps, park site plans, opinion questions, and a kids table for drawing imaginative ideas.

The event was advertised through the community newsletter, which is delivered to the homes of every resident each quarter. This was mailed out the last week of September 2023. This is included in the appendices. In the invitation was included a call for residents to participate in the online community survey. The same invitation was posted to the township's website.

SURVEY SUMMARY

The community survey was created as an online Google Forms survey. It consisted of 34 planning questions, which are included in the appendices. The survey was advertised in September at the same time as the community input event through the same means. Zeeland Rec also sent out a second advertisement of the survey through its email list in early November. The survey was held open from October 1, 2023 through December 31, 2023.

The survey asked the respondents 34 questions. Questions asked the respondents about their use of Zeeland Charter Township parks, the park amenities and programming, how the respondents chose with park(s) to visit, the respondents' views on the condition, accessibility, and safety of the township parks, what has prevented the respondents from visiting township park(s), respondents' view on seasonal programming, what the respondents feel are missing from township park(s), and project-specific questions about walking path extensions, corn hole, bocce ball, and/or volleyball court additions to Drenthe Grove Park as well as open-ended questions about what amenities the respondents would like to see at Drenthe Grove Park and/or Zoeren Woods Park.

The township received 14 responses to the public survey. The results show that walking trails are the most used amenity in the township with 100% of respondents indicating that they use this amenity year-round. One-hundred percent of respondents noted that the park being located nearby was the first reason they chose which park to visit. Respondents overwhelmingly stated that having more amenities and/or programming in the winter is needed in the township [64.3%]. The respondents noted that they would like to see more walking trails [71.4%], natural swimming area [64.3%], and fishing opportunities [57.1%]. Of the project-specific questions about Drenthe Grove Park, the results show that respondents are most interested in a walking trail addition [92.9%] followed by a corn hole court [50%], a bocce ball court [35.7%] and lastly a volleyball court [14.3%]. Additional ideas from respondents for amenities

for Drenthe Grove Park include swimming, disc golf, swings, stocking fish in the existing pond, a second fishing dock, a covered pavilion near the pond, and ice skating. The respondents noted that would like to see the following changes or additions to Van Zoeren park: a bridge over the ravine, picnic area, natural play area, snow shoe rental, and cross country ski rental. When asked what is their highest priority for the next five years they responded with access to natural resources as the highest priority followed by regional trails connecting facilities and nature-based play opportunities.

A draft Community Recreation Plan for Zeeland Charter Township was available at _____ for public review from _____ through _____. Members of the public were invited through an announcement in _____ to comment on the draft Community Recreation Plan. They were encouraged to provide comment by either submitting written comments to TowerPinkster, the township's consultant, and/or by attending the public hearing. A copy of the notice of availability of the draft Community Recreation Plan for comment as well as the affidavit of publication are included in appendix _____.

The township advertised the public meeting notice in the _____ on _____ to present the Community Recreation Plan for Zeeland Charter Township for public input on _____. The plan was presented for adoption during the Planning Commission Meeting on _____ where _____ number of board members approved the resolution to adopt the Community Recreation Plan. A copy of the notice of the public meeting, the affidavit of the publication for the public meeting and the Planning Commission meeting minutes have been included in appendix _____ and _____, respectfully. A copy of the resolution adopting the Community Recreation Plan dated _____ has been included in appendix _____.

06 GOALS AND OBJECTIVES

GOALS AND OBJECTIVES

DRAFT

OVERVIEW

In order to stay on a logical, programmed course of action during the next five years, the Zeeland Area has developed the following goals and objectives. These goals and objectives are based upon the recreation inventory and needs assessment, and direct input from citizens, advisory groups and staff.

The goals are long-range in nature and intended to be broad in scope and flexible enough to accommodate future change. The objectives are short-range in nature and intended to direct specific program and development decisions to be made in the next five years. Goals and objectives are meant to guide the intent of the actions to be taken but flexible enough to reflect changing attitudes and opportunities as may present themselves. Passage of time and attitude changes can impact specific options. A degree of flexibility is therefore essential for the providers to be responsive to their citizens.

SHARED GOALS FOR ALL PLAN PARTICIPANTS

The following goals and objectives were developed through the planning process and are intended to guide recreational development within the entire plan service area and the various bodies it encompasses.

Develop and maintain an area-wide Recreation Plan to ensure that funds are spent efficiently and to assure eligibility for State funded grant programs.

GOAL 1.

PROVIDE A BALANCED SYSTEM OF PARK AND RECREATION FACILITIES IN THE ZEELAND AREA WITH OPPORTUNITIES AND PROGRAMS FOR RESIDENTS OF ALL AGES AND ABILITIES.

OBJECTIVES:

- Continue to maintain the high quality of existing parks.
- Provide and utilize all available district facilities for community recreation use.
- Develop School-Park concept to expand use of school properties.

- Acquire and develop land for parks to serve existing and future residents.
- Plan and develop park areas to offer passive as well as active opportunities.
- Rehabilitate and improve existing park sites to meet and exceed all safety and accessibility regulations.
- Continue to provide quality programs that will allow recreation to be a fulfilling experience and promote healthy lifestyles for all residents, regardless of race, religion, income, and ability.

GOAL 2.

EXPAND THE DIVERSITY OF RECREATION FACILITIES AVAILABLE TO OFFER YEAR-ROUND OPPORTUNITIES TO MEET CURRENT AND FUTURE DEMAND.

OBJECTIVES:

- Meet the demand for active sports facilities to support the need in the community.
- Expand opportunities for year-round recreation activities.
- Expand opportunities for passive recreation and un-programmed activities, such as picnic facilities, walking trails, fishing and wildlife viewing.

GOAL 3.

BALANCE RECREATIONAL DEVELOPMENT WITH THE PRESERVATION AND PROTECTION OF NATURAL HABITATS AND OTHER ENVIRONMENTALLY SENSITIVE AREAS.

OBJECTIVES:

- Acquire environmentally sensitive land such as riverfront, waterfront, and wetland property as it becomes available.
- Manage and enhance environmental areas to protect water quality and natural habitat.
- Design parks to encourage appropriate public use and to minimize impact to important natural features.
- Provide environmental and historical education opportunities as appropriate.

GOAL 4.

MAXIMIZE RECREATIONAL OPPORTUNITIES FOR ZEELAND CHARTER TOWNSHIP BY COORDINATING WITH SURROUNDING COMMUNITIES TO ENSURE FACILITIES ARE NOT DUPLICATED UNNECESSARILY.

OBJECTIVES:

- Work with, encourage and support all community, school system and municipal groups, organizations and agencies to promote and expand recreation opportunities and programs for all age groups in all areas of Zeeland in an efficient and coordinated manner.
- Work cooperatively with adjacent communities to provide joint facilities and connections between park systems.
- Mutually utilize recreation facilities and resources to minimize deficiencies.
- Encourage philanthropic and other non-tax financial support for parks and recreation facilities.

GOAL 5**STRIVE TO CONNECT RECREATIONAL FACILITIES TO SCHOOLS, RESIDENTIAL AREAS AND TO ONE ANOTHER WITH NON-MOTORIZED TRAILS THAT PROVIDE SAFE, AND ACCESSIBLE RECREATIONAL EXPERIENCES.****OBJECTIVES:**

- Develop trail systems within existing park lands.
- Maintain and continue to expand the existing bike path and sidewalk system.
- Construct additional bike path segments from existing systems to all future acquisitions.
- Connect recreational facilities to schools, residential areas, and to one another with multipurpose paved trails.

07 ACTION PROGRAM

ACTION PROGRAM

DRAFT

OVERVIEW

The Action Program and Capital Improvement Schedule of the Zeeland Area Community Park and Recreation Plan states the proposed course of development or improvement that will be taken over the next five years for Zeeland Recreation and each of the participating local governments. The Goals and Objectives, from the previous section, serve as guidelines for the development of the Action Program. The Capital Improvement Schedule, which follows, will focus on the needs identified in the Action Program and will project potential expenditures for the five-year action period on a year-by-year basis. The five-year period will begin in 2024 and extend through 2029. This time period will not be sufficient to accomplish all of the goals and objectives, but begins to prioritize those projects that may be achievable within the initial five years.

The Action Program focuses on reduction of deficiencies and expansion and improvements of facilities in a manner that not only meets current needs, but also diversifies the type and quality of recreational opportunities within the planning area. The Parks and Recreation Plan identifies these needs in general terms in the Recreation Needs and Deficiencies section; the Action Plan describes specific actions to be taken to address these needs; and the Capital Improvement Schedule specifically itemizes those projects which will be most feasible during the next five years. The proposed schedule will allow for flexibility as funds become available and as opportunities are presented. The following actions are comprehensive and may require more than five years to complete.

Action Item	2024	2025	2026	2027	2028	2029	Cost Per Item (estimated)	Cost per Year (estimated)	Funding Source
DRENTHE COMMUNITY GROVE									
Major Repair - Dozeman Center	\$45,200.00						\$45,200.00		
Pickleball Amenities	\$13,400.00						\$13,400.00		
Replace North Tennis Court or Convert to Pickleball		\$70,000.00					\$70,000.00		
Replace Utility Vehicle		\$10,000.00					\$10,000.00		
Resurface Basketball Court			\$80,000.00				\$80,000.00		
Walking Trail/Bridge/Pond Area Renovation SW Corner				\$500,000.00			\$500,000.00		
Replace Out Buildings in Recreation Area				\$45,000.00			\$45,000.00	\$763,600.00	General Fund, MDNR Grants
VAN ZOEREN WOODS									
Boardwalks Across Ravines	\$350,000.00						\$350,000.00		
Prairie Trail Improvements			\$521,500.00				\$521,500.00	\$871,500.00	General Fund, MDNR Grants
ZEELAND CHARTER TOWNSHIP COMMUNITY									
Playground Area and Picnic Shelter							\$0.00	\$0.00	General Fund, MDNR Grants
BIKE PATHS									
Various Boardwalk Rehabilitation				\$250,800.00			\$250,800.00		
Macatawa River Trail 96th to Adams (w/ HCT/OC)	\$100,000.00						\$100,000.00	\$350,800.00	General Fund, MDNR Grants

Estimated Expenditures for Zeeland Charter Township

Total 5-year Cost: \$1,985,900.00

09

APPENDIX



GRANT HISTORY

Grantee

Zeeland Charter Township - Ottawa County

Project No. 26-01590 **Project County:** Ottawa **Project Year:** 2001
Project title: Drenthe Grove Park Improvements
Project Status: Grant Closed **Grant Amount:**
\$68,500.00

Scope Item

Equipment
Handicap accessible picnic tables
Landscaping
Other play court
Pave access drive and parking (barrier free)
Pave barrier free walkway
Tennis courts

Project Description: Upgrade access, parking and recreational facilities, as well as provide additional recreational activities.

Project No. TF03-070 **Project County:** Ottawa **Project Year:** 2003
Project title: Drenthe Grove Park Expansion
Project Status: Grant Closed **Grant Amount:**
\$80,400.00

Scope Item

Project Description: Acquisition in fee simple title of 13 acres adjacent to Drenthe Grove Park for future expansion of park and recreational opportunities. Parcel includes 0.6 acre wetland and 500' along Hunderman Creek.

Project No. TF13-041 **Project County:** Ottawa **Project Year:** 2013
Project title: Drenthe Grove Park Improvements
Project Status: Grant Closed **Grant Amount:**
\$50,000.00

Scope Item

Electrical work and installation
MNRTF sign
New lighting system equipment
Remove existing lighting system

Project Description: Development to include replacing the existing field lighting system on the softball field, which will include poles, light fixtures, and wiring. Drenthe Grove Park is approximately 20 acres and serves the entire Zeeland community. This park was established in 1930 and is the oldest park in Zeeland Charter Township. The park also includes a natural pond, paved trail, courts, and picnic shelter.



GRANT HISTORY

Grantee

Zeeland Charter Township - Ottawa County

Total number of projects: 3

Total Amount of Grant Given \$198,900.00

APPENDIX

ZEELAND CHARTER TOWNSHIP

COMMUNITY PARKS AND REC MASTER PLAN MEETING

Oct. 10, 6:00 PM, Drenthe Grove Dozeman Center

WE WANT TO KNOW WHAT YOU THINK!

SHARE Your ideas and suggestions are important. Your input will help envision future improvements to the parks, trails, playgrounds, and natural recreation areas in our community.



COMMUNITY PARKS & REC MASTER PLAN MEETING

JOIN US! Zeeland Charter Township, in partnership with Zeeland Rec., is engaging in a planning effort this fall to help set the course for the future of parks and recreation in Zeeland Township over the next five years [2024-2029]. As community members, your input is important and will help shape the future plans.

ENGAGE We will be hosting an event to hear from you, our Zeeland Chart Township residents, on **Tuesday, October 10th at 6:00pm**, at the **Drenthe Grove Dozeman Center**.



Drenthe Grove Dozeman Center
615 68th Ave, Zeeland Charter Township, MI

**IF YOU HAVEN'T YET, SHARE
YOUR INPUT, TAKE THE SURVEY!**

Go to our website,
www.zeelandtwp.org



SCAN ME



**ZEELAND
CHARTER
TOWNSHIP**

TowerPinkster
Architecture · Engineering · Interiors



ZEELAND CHARTER TOWNSHIP



WHAT ARE WE DOING TODAY?

ZEELAND CHARTER TOWNSHIP – PUBLIC ENGAGEMENT OPEN HOUSE

YOU ARE SHAPING THE FUTURE! Today's open house is about you and our community, and what the future of recreation could look like over the next five years. Your voice is so important! Thank you for coming. We look forward to learning from you!

WHAT'S THE AGENDA? There are several stations set out around the room for you to visit. You will be stopping at each one and providing comments, sticky dots, or doing some form of activity in response to a particular planning question. Below is a list of each station with a short set of instructions for each.

EXHIBIT 1 – EXPANDING THE REGIONAL TRAIL NETWORK

Look over the map and tell us how you think the township's regional trail network should be expanded. Please draw directly on the map, or write on a sticky note and place it on the map where it relates, and tell us a) potential routes of interest, b) destinations that should be connected to, and/or c) places where trailheads or access points should be added. Other comments are welcome, as well!

EXHIBIT 2 – DRENTHE GROVE PARK PLAN – “What do you want to see added/changed at this park?”

Look over the current park aerial and either draw on the map, or place a sticky on the map with comments of your thoughts/ideas.

EXHIBIT 3 – VANZOEREN PARK PLAN – “What do you want to see added/changed at this park?”

Look over the current park aerial and either draw on the map, or place a sticky on the map with comments of your thoughts/ideas.

EXHIBIT 4 – FUTURE PARK LOCATIONS – “Where do you think future parks should be created?”

Look over the township map and either draw on the map, or place a sticky on the map with comments of your thoughts/ideas.

EXHIBIT 5 – STICKY THOUGHTS – “What kinds of things do you think make for a great park and recreation system?”

Write down your thoughts on a sticky in answer to the question and place them in the blank area under the question.

EXHIBIT 6 – DOT POLLING – “What do you want to see more of in our parks system?”

Take some sticky dots and put them on the images you want to see more of in our parks system.

BONUS TABLE - DRAW YOUR OWN PARK! For any kids, or kids at heart, there is a bonus table where you can spend time drawing things you'd like to see in a park near you. You could draw the entire park, just one thing that could go in a park, or anything else you might imagine would make your parks more awesome.

PLANNING PROCESS OVERVIEW

ZEELAND CHARTER TOWNSHIP - FIVE YEAR RECREATION MASTER PLAN

WHAT IS A FIVE YEAR RECREATION MASTER PLAN? A Five Year Recreation Master Plan, for the purposes of the State of Michigan, is a planning document that details a governmental entity's planned goals and objects for their recreation system, including potential capital improvement projects. The State of Michigan requires this planning document to be on-file for an entity to be eligible to apply for the State's various recreation grant programs.

ELEMENTS OF THE PLAN

1. An outline or description of the organization's jurisdiction, structure, and budget.
2. An inventory of the entity's parks and a summary of the recreation opportunities available in the area.
3. A description of public engagement outcomes and any other analysis of the area's recreation system to determine needs.
4. An outline of the entity's recreational goals and objectives, a list of capital improvement projects, and an action plan for the next five years.

PREVIOUS EFFORTS. In 2015, Zeeland Charter Township was part of our area's regional recreation planning process that produced the last five year recreation master plan. This planning document was led by Zeeland Rec – our area's primary provider of recreation programming – and included other area cities and townships. That 2015 plan set the stage for continued improvements at Drenthe Grove and VanZoeren Woods, as well as the expansion of our township's regional trail network. Those have been major highlights within our community and have brought a lot of value to our residents! The plan expired in 2020, but we've carried on implementing improvements to the system and enjoying a vibrant recreation culture in our township.

WHERE ARE WE GOING NOW? We are now looking forward to another five years of improvements and are seeking to update our plan with the community's current needs and desires. Zeeland Rec is continuing to partner with us in the development of this plan, but this time around Zeeland Charter Township is going to be the sole entity in the plan, as some of our area partners have done recently. We will still coordinate with other entities in the area, but we have the exciting opportunity to focus exclusively on Zeeland Charter Township in this plan and we look forward to the outcomes of this effort!

Don't forget! Take the online survey! Scan the QR code to the right
or visit <https://forms.gle/ij5zWwaSprHx2FNn8>







ZEELAND CHARTER TOWNSHIP



PUBLIC ENGAGEMENT OPEN HOUSE

SIGN-IN SHEET

DATE: October, 10, 2023
PROJECT: Zeeland Charter Township Five Year Recreation Master Plan

INITIALS	NAME	RESIDENT (Y/N)	PHONE NUMBER	EMAIL ADDRESS



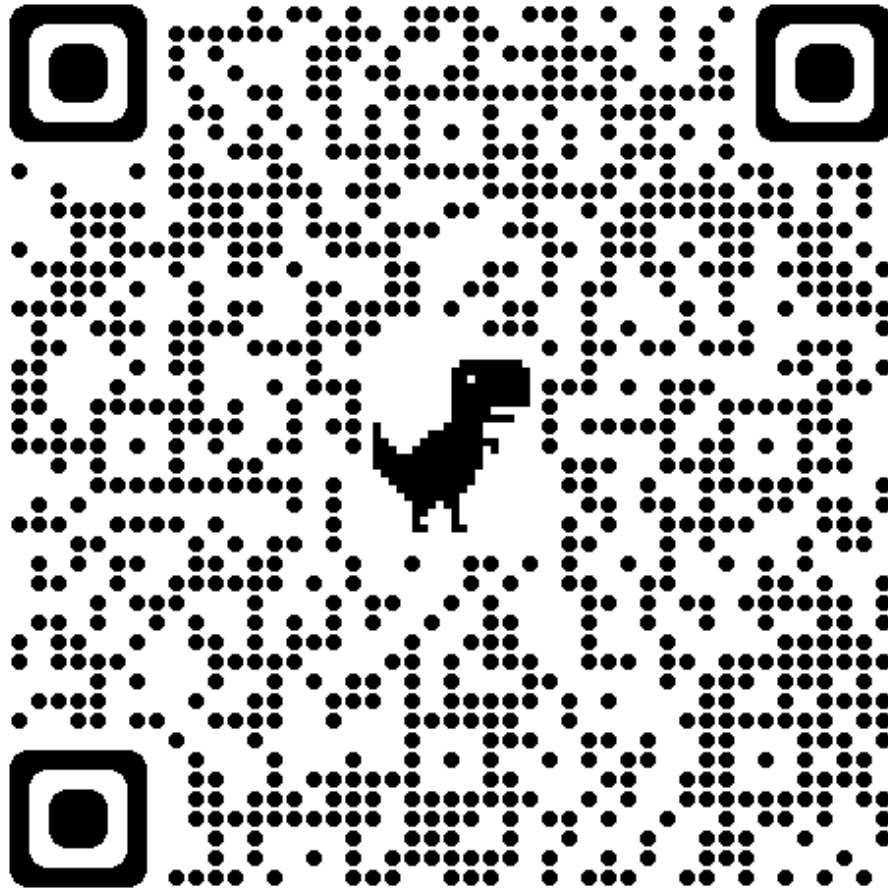
ZEELAND CHARTER TOWNSHIP



TAKE THE SURVEY!

ZEELAND CHARTER TOWNSHIP - FIVE YEAR RECREATION MASTER PLAN

We've put together an online survey and we'd appreciate your additional input! The survey covers some specific questions to help us dig a little deeper into your opinions. Your voice is what matters and we look forward to making your thoughts part of the future of our recreation system.

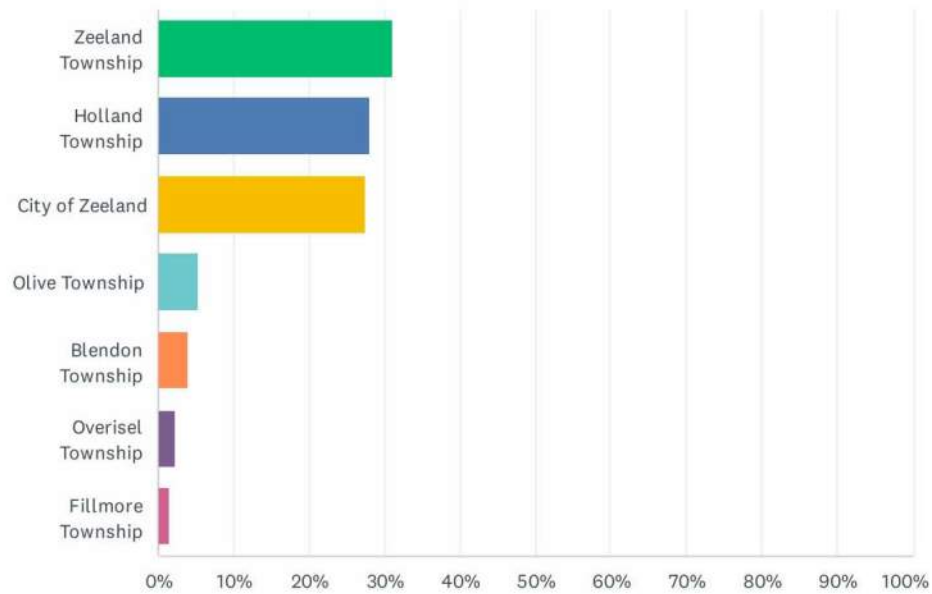


Or visit <https://forms.gle/ij5zWwaSprHx2FNn8>

Zeeland Recreation Community Survey

Q1 What Municipality Do Currently You Live In?

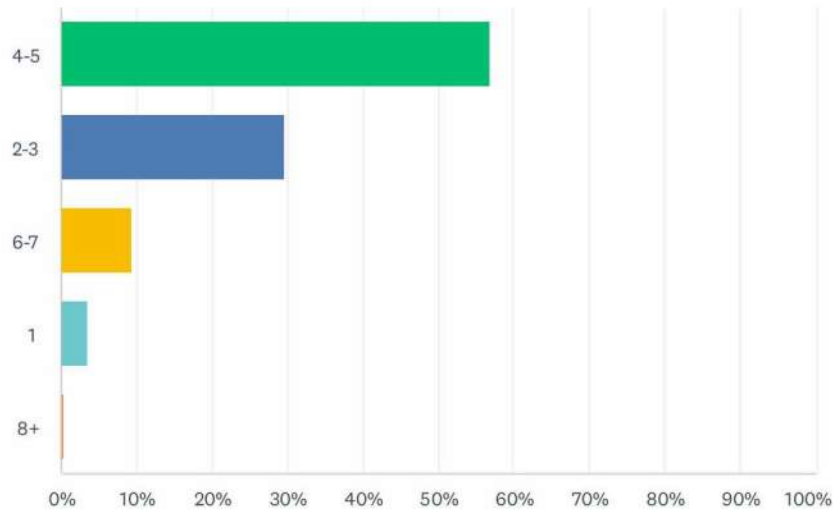
Answered: 708 Skipped: 104



ANSWER CHOICES	RESPONSES	
Zeeland Township	31.21%	221
Holland Township	28.25%	200
City of Zeeland	27.40%	194
Olive Township	5.37%	38
Blendon Township	4.10%	29
Overisel Township	2.26%	16
Fillmore Township	1.41%	10
TOTAL		708

Q2 How Many People Currently Live in Your Household?

Answered: 812 Skipped: 0

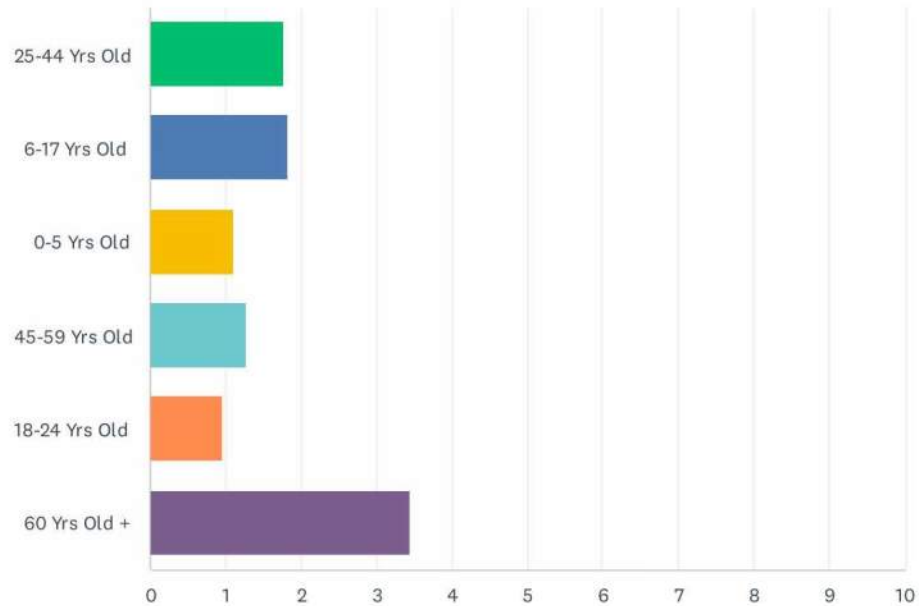


ANSWER CHOICES	RESPONSES	
4-5	56.90%	462
2-3	29.56%	240
6-7	9.48%	77
1	3.69%	30
8+	0.37%	3
TOTAL		812

Zeeland Recreation Community Survey

Q3 How Many People in Your Household Are...

Answered: 811 Skipped: 1



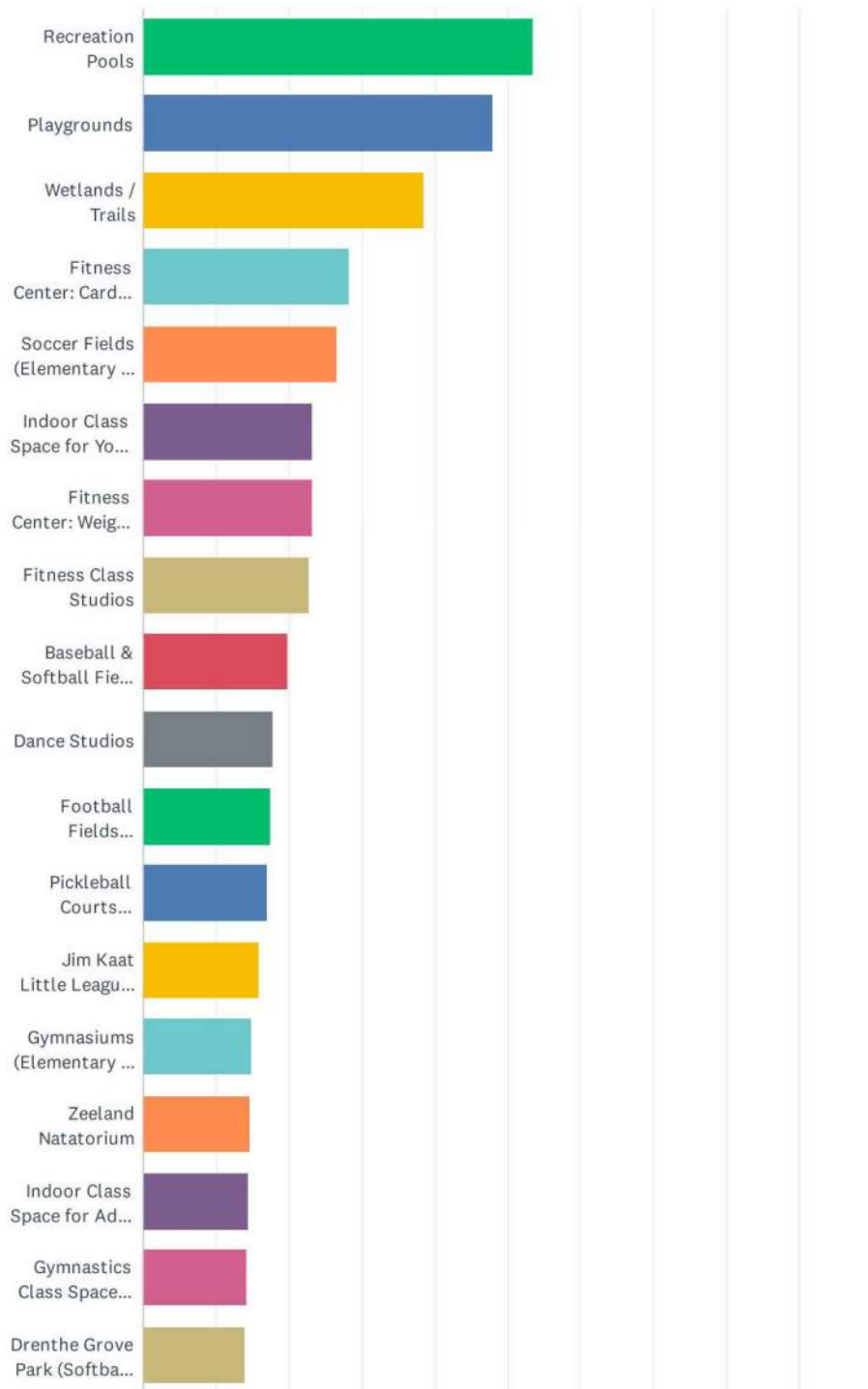
ANSWER CHOICES	AVERAGE NUMBER	TOTAL NUMBER	RESPONSES
25-44 Yrs Old	2	1,045	589
6-17 Yrs Old	2	1,046	573
0-5 Yrs Old	1	345	310
45-59 Yrs Old	1	388	305
18-24 Yrs Old	1	207	214
60 Yrs Old +	3	613	177
Total Respondents: 811			

Q4 What Recreation Program(s) Would You Like to See Added and/or Expanded for You and/or Your Family?

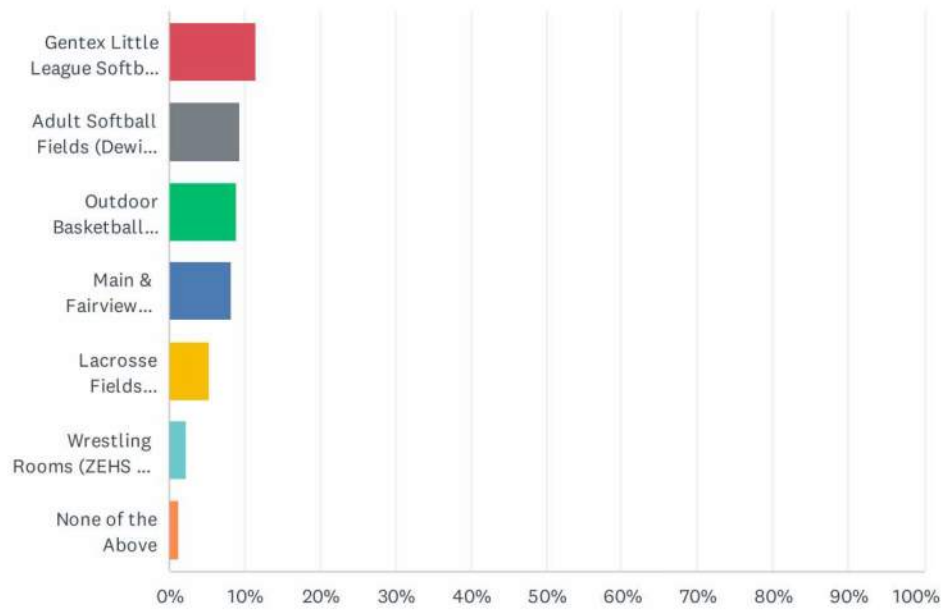
Answered: 611 Skipped: 201

Q5 Please Check The Box(es) Next to the Existing Zeeland Recreation Facilities that are Most Important to Your Household. Check all that Apply.

Answered: 802 Skipped: 10



Zeeland Recreation Community Survey

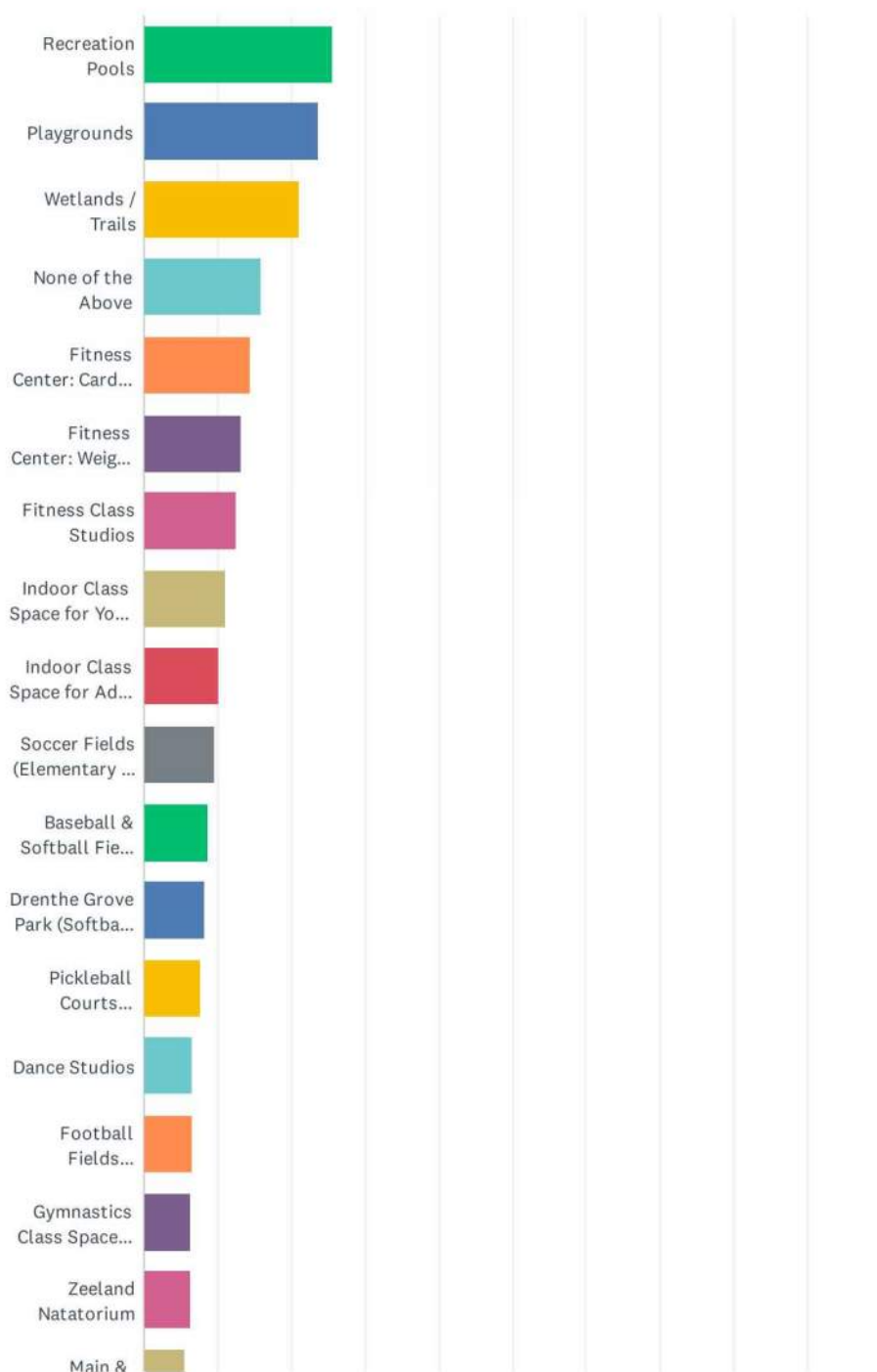


Zeeland Recreation Community Survey

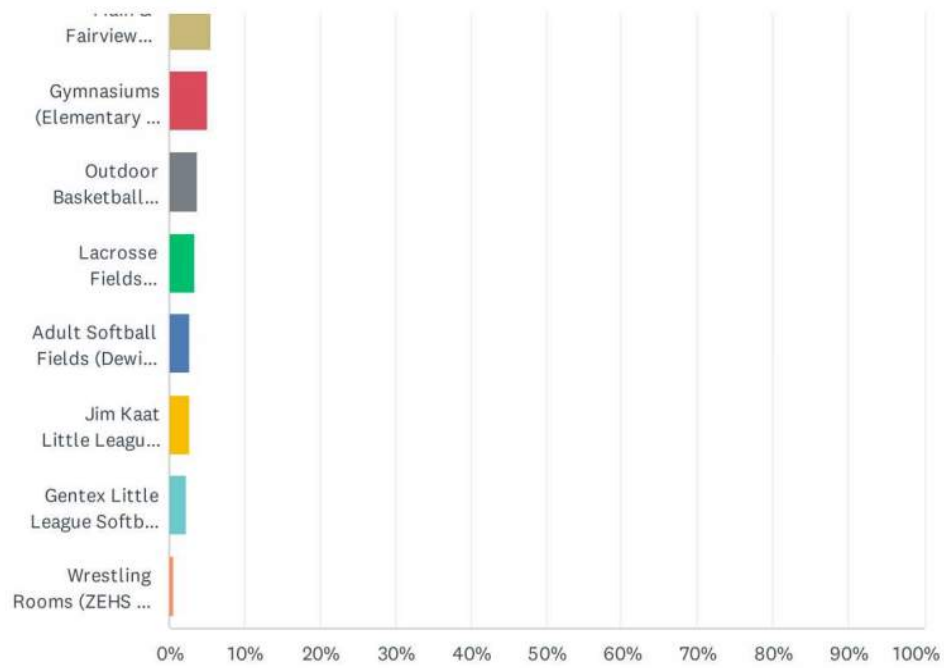
ANSWER CHOICES	RESPONSES	
Recreation Pools	53.49%	429
Playgrounds	48.00%	385
Wetlands / Trails	38.53%	309
Fitness Center: Cardio Equipment	28.30%	227
Soccer Fields (Elementary & Middle Schools)	26.68%	214
Indoor Class Space for Youth Programs (Art, Baking, Motor Development, Science, Theater, etc.)	23.32%	187
Fitness Center: Weight Training Equipment	23.19%	186
Fitness Class Studios	22.82%	183
Baseball & Softball Fields (Elementary Schools)	19.83%	159
Dance Studios	17.83%	143
Football Fields (Elementary Schools, Middle Schools, Zeeland Stadium)	17.46%	140
Pickleball Courts (Huizenga Park)	17.08%	137
Jim Kaat Little League Baseball Park	15.96%	128
Gymnasiums (Elementary & Middle Schools)	14.84%	119
Zeeland Natatorium	14.71%	118
Indoor Class Space for Adult Programs (Baking, Canning, Euchre, etc.)	14.46%	116
Gymnastics Class Space (Cityside MS)	14.34%	115
Drenthe Grove Park (Softball Field, Green Space, Tennis Courts)	14.09%	113
Gentex Little League Softball Fields (Huizenga Park)	11.47%	92
Adult Softball Fields (Dewitt Sports Complex)	9.35%	75
Outdoor Basketball Court (Riley & 96th St)	8.85%	71
Main & Fairview Athletic Fields	8.35%	67
Lacrosse Fields (Elementary & Middle Schools)	5.24%	42
Wrestling Rooms (ZEHS & ZWHS)	2.24%	18
None of the Above	1.37%	11
Total Respondents: 802		

Q6 Please Check the Box(es) for the Existing Zeeland Recreation Facilities/Spaces You Would Most Like to See Improved and/or Expanded. Check all that Apply.

Answered: 735 Skipped: 77



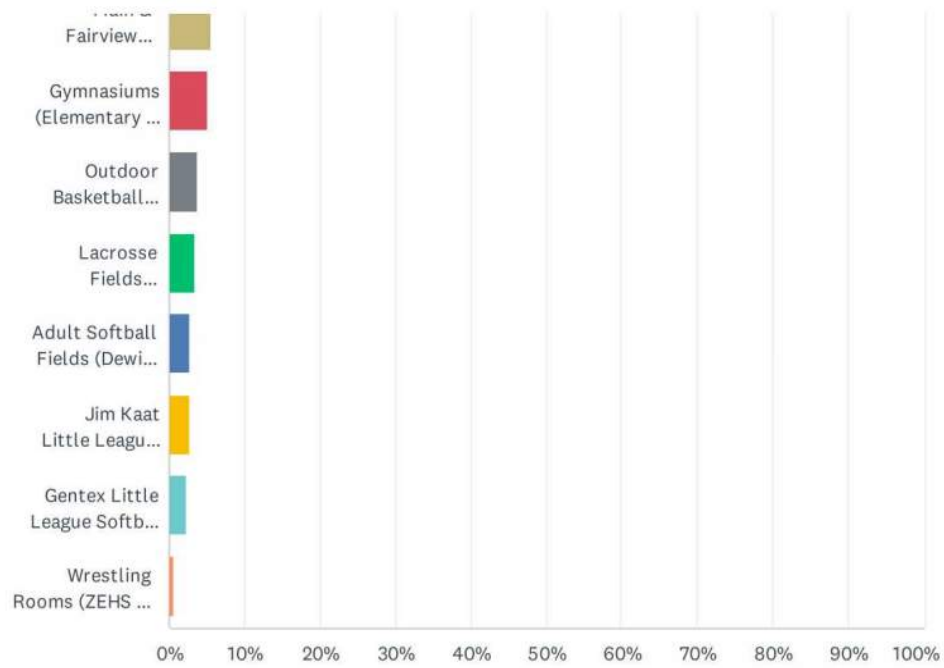
Zeeland Recreation Community Survey



Zeeland Recreation Community Survey

ANSWER CHOICES	RESPONSES	
Recreation Pools	25.58%	188
Playgrounds	23.67%	174
Wetlands / Trails	21.09%	155
None of the Above	15.92%	117
Fitness Center: Cardio Equipment	14.56%	107
Fitness Center: Weight Training Equipment	13.20%	97
Fitness Class Studios	12.52%	92
Indoor Class Space for Youth Programs (Art, Baking, Motor Development, Science, Theater, etc.)	11.02%	81
Indoor Class Space for Adult Programs (Baking, Canning, Euchre, etc.)	10.20%	75
Soccer Fields (Elementary & Middle Schools)	9.52%	70
Baseball & Softball Fields (Elementary Schools)	8.84%	65
Drenthe Grove Park (Softball Field, Green Space, Tennis Courts)	8.30%	61
Pickleball Courts (Huizenga Park)	7.62%	56
Dance Studios	6.53%	48
Football Fields (Elementary Schools, Middle Schools, Zeeland Stadium)	6.53%	48
Gymnastics Class Space (Cityside MS)	6.39%	47
Zeeland Natatorium	6.39%	47
Main & Fairview Athletic Fields	5.44%	40
Gymnasiums (Elementary & Middle Schools)	5.17%	38
Outdoor Basketball Court (Riley & 96th St)	3.81%	28
Lacrosse Fields (Elementary & Middle Schools)	3.40%	25
Adult Softball Fields (Dewitt Sports Complex)	2.72%	20
Jim Kaat Little League Baseball Park	2.72%	20
Gentex Little League Softball Fields (Huizenga Park)	2.31%	17
Wrestling Rooms (ZEHS & ZWHS)	0.54%	4
Total Respondents: 735		

Zeeland Recreation Community Survey

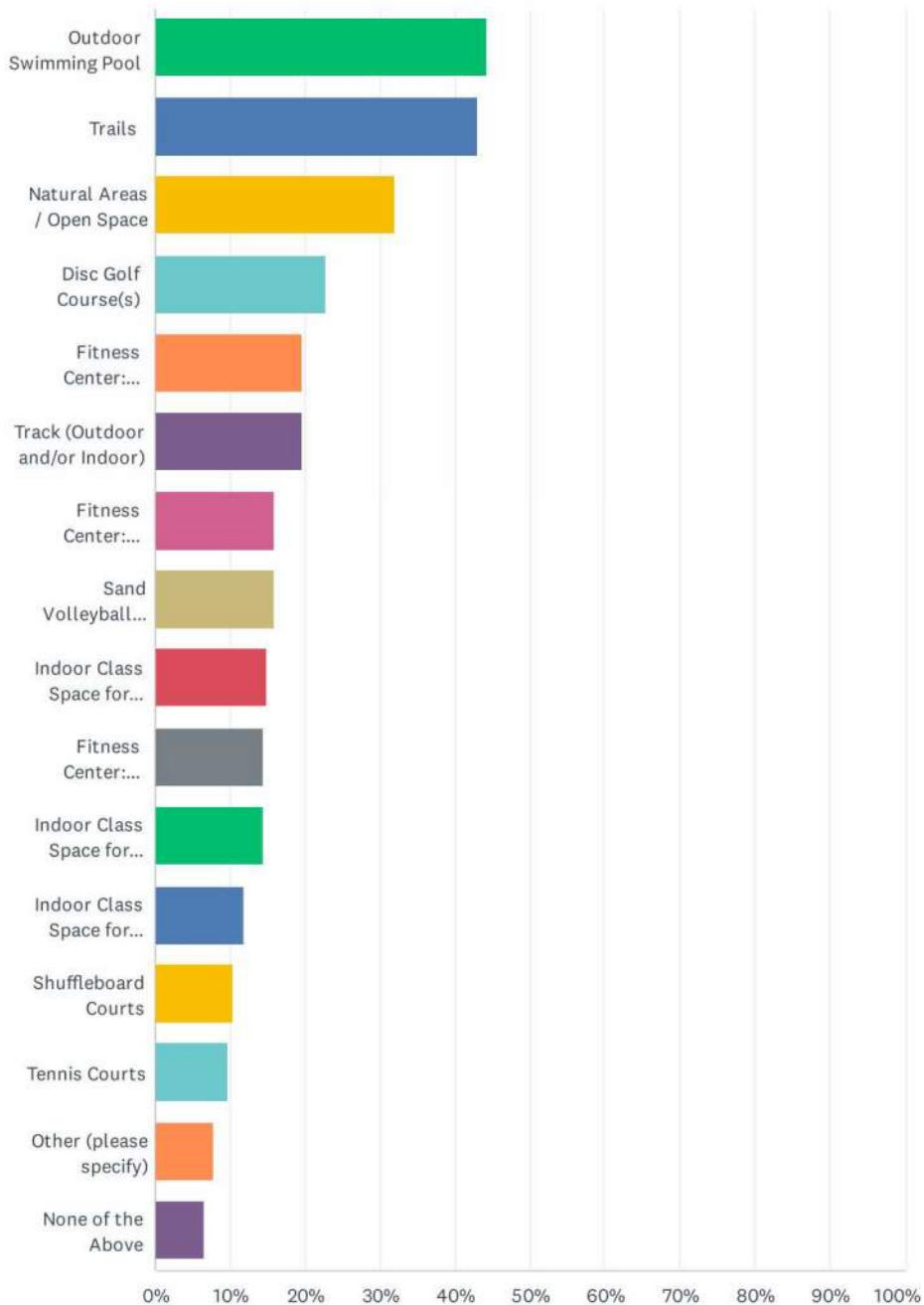


Zeeland Recreation Community Survey

ANSWER CHOICES	RESPONSES	
Recreation Pools	25.58%	188
Playgrounds	23.67%	174
Wetlands / Trails	21.09%	155
None of the Above	15.92%	117
Fitness Center: Cardio Equipment	14.56%	107
Fitness Center: Weight Training Equipment	13.20%	97
Fitness Class Studios	12.52%	92
Indoor Class Space for Youth Programs (Art, Baking, Motor Development, Science, Theater, etc.)	11.02%	81
Indoor Class Space for Adult Programs (Baking, Canning, Euchre, etc.)	10.20%	75
Soccer Fields (Elementary & Middle Schools)	9.52%	70
Baseball & Softball Fields (Elementary Schools)	8.84%	65
Drenthe Grove Park (Softball Field, Green Space, Tennis Courts)	8.30%	61
Pickleball Courts (Huizenga Park)	7.62%	56
Dance Studios	6.53%	48
Football Fields (Elementary Schools, Middle Schools, Zeeland Stadium)	6.53%	48
Gymnastics Class Space (Cityside MS)	6.39%	47
Zeeland Natatorium	6.39%	47
Main & Fairview Athletic Fields	5.44%	40
Gymnasiums (Elementary & Middle Schools)	5.17%	38
Outdoor Basketball Court (Riley & 96th St)	3.81%	28
Lacrosse Fields (Elementary & Middle Schools)	3.40%	25
Adult Softball Fields (Dewitt Sports Complex)	2.72%	20
Jim Kaat Little League Baseball Park	2.72%	20
Gentex Little League Softball Fields (Huizenga Park)	2.31%	17
Wrestling Rooms (ZEHS & ZWHS)	0.54%	4
Total Respondents: 735		

Q7 What Additional Facilities/Spaces Would You Like to See Added by Zeeland Recreation to the Zeeland Area for Public Use? Check all that Apply.

Answered: 781 Skipped: 31



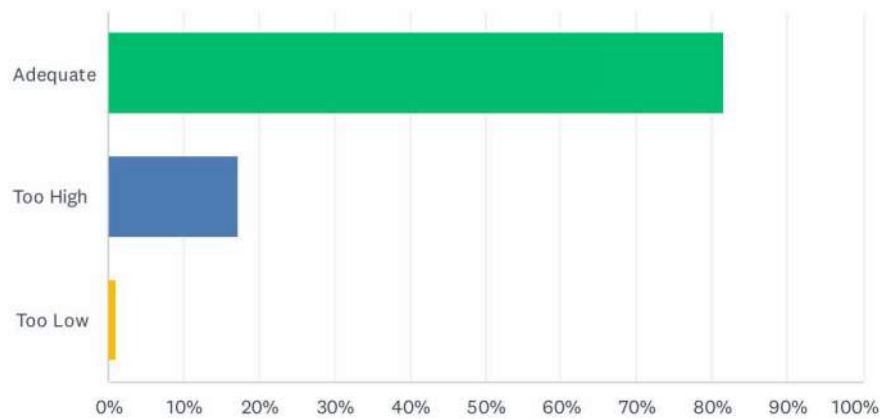
Zeeland Recreation Community Survey

ANSWER CHOICES	RESPONSES	
Outdoor Swimming Pool	44.43%	347
Trails	43.15%	337
Natural Areas / Open Space	32.01%	250
Disc Golf Course(s)	22.79%	178
Fitness Center: Additional Free Space (Stretching, Individual Workout Space, etc)	19.72%	154
Track (Outdoor and/or Indoor)	19.72%	154
Fitness Center: Additional Cardio Equipment	16.01%	125
Sand Volleyball Courts	16.01%	125
Indoor Class Space for Additional Youth Programs	14.98%	117
Fitness Center: Additional Weight Training Equipment	14.60%	114
Indoor Class Space for Infant/Toddler Programs During the Day	14.60%	114
Indoor Class Space for Additional Adult Program	12.04%	94
Shuffleboard Courts	10.37%	81
Tennis Courts	9.86%	77
Other (please specify)	7.81%	61
None of the Above	6.53%	51
Total Respondents: 781		

Zeeland Recreation Community Survey

Q8 Do You Think the Current Registration Fee Rates for Zeeland Recreation Programs are...

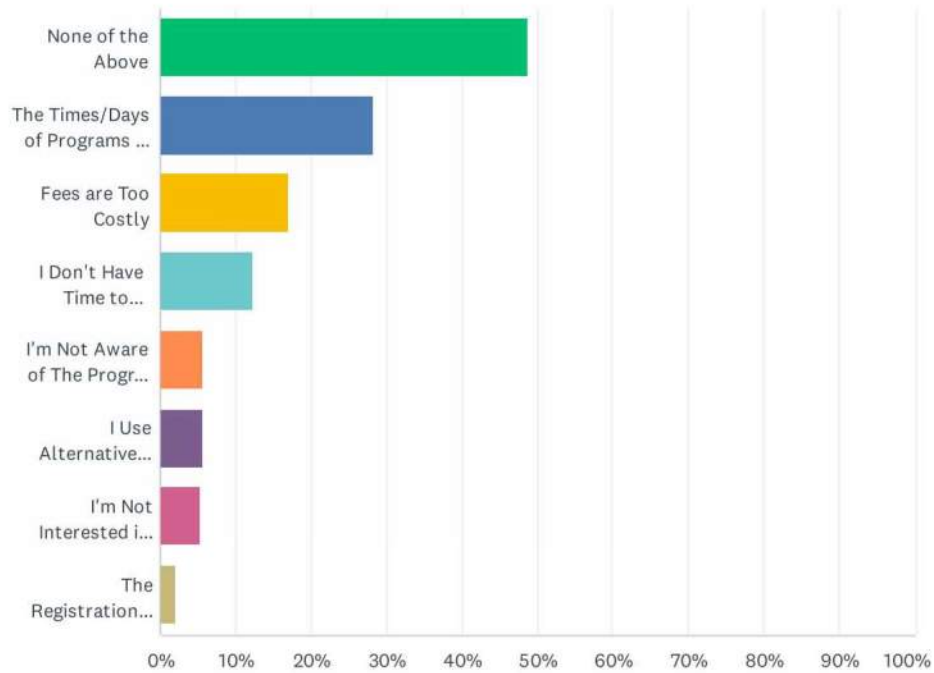
Answered: 801 Skipped: 11



ANSWER CHOICES	RESPONSES	
Adequate	81.65%	654
Too High	17.35%	139
Too Low	1.00%	8
TOTAL		801

Q9 If You Do Not Participate in Zeeland Recreation Programs, Please Tell Us Why. Check all that Apply.

Answered: 607 Skipped: 205

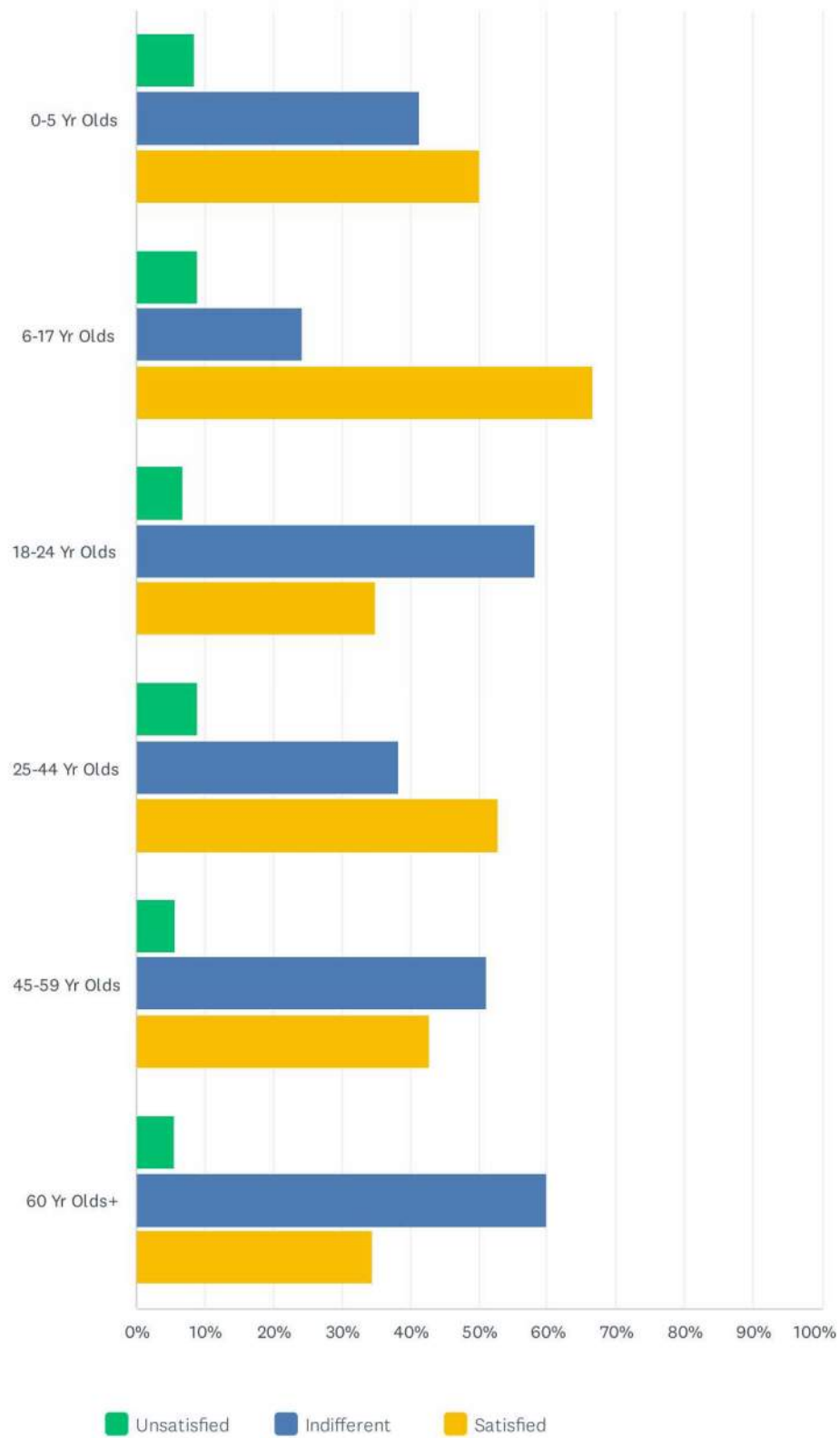


ANSWER CHOICES	RESPONSES	
None of the Above	48.93%	297
The Times/Days of Programs Do Not Work With Me and/or My Families Schedule	28.34%	172
Fees are Too Costly	16.97%	103
I Don't Have Time to Participate	12.36%	75
I'm Not Aware of The Programs That Are Offered	5.77%	35
I Use Alternative Recreation Programming	5.77%	35
I'm Not Interested in the Programs That Are Offered	5.27%	32
The Registration Process is Too Difficult	2.14%	13
Total Respondents: 607		

**Q10 What is Your Level of Satisfaction with the Recreation Programs
Offered for the Following Age Groups?**

Answered: 788 Skipped: 24

Zeeland Recreation Community Survey



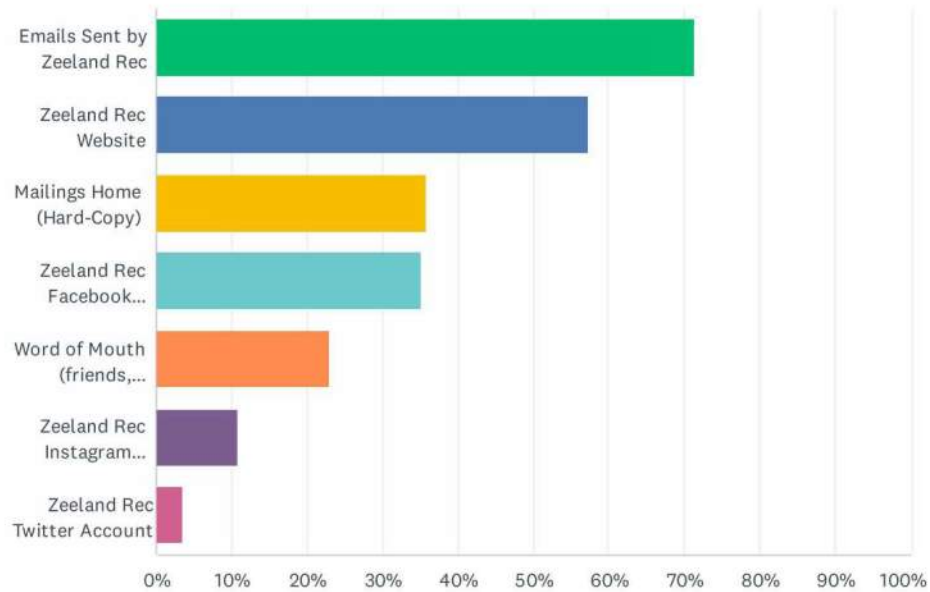
Zeeland Recreation Community Survey

	UNSATISFIED	INDIFFERENT	SATISFIED	TOTAL
0-5 Yr Olds	8.55% 49	41.36% 237	50.09% 287	573
6-17 Yr Olds	8.93% 59	24.36% 161	66.72% 441	661
18-24 Yr Olds	6.80% 33	58.14% 282	35.05% 170	485
25-44 Yr Olds	8.92% 51	38.29% 219	52.80% 302	572
45-59 Yr Olds	5.83% 30	51.26% 264	42.91% 221	515
60 Yr Olds+	5.65% 28	59.88% 297	34.48% 171	496

Zeeland Recreation Community Survey

Q11 How Do You Get Information About Zeeland Recreation Programs? Click All that Apply:

Answered: 806 Skipped: 6



ANSWER CHOICES	RESPONSES	
Emails Sent by Zeeland Rec	71.46%	576
Zeeland Rec Website	57.44%	463
Mailings Home (Hard-Copy)	35.86%	289
Zeeland Rec Facebook Account	35.11%	283
Word of Mouth (friends, family)	22.95%	185
Zeeland Rec Instagram Account	10.79%	87
Zeeland Rec Twitter Account	3.72%	30
Total Respondents: 806		

Q12 Thank you for Your Participation in this Survey! Please Use the Space Below to Make Any Additional Comments You May Have.

Answered: 246 Skipped: 566

Q13 To Enter Your Name into a Drawing for a \$100 Gift Card to Zeeland Rec, Please Enter Your Name + Email Address Below.*Your Answers To The Questions Above Will Remain Anonymous, Even if You Enter Your Name + Email Address Here

Answered: 730 Skipped: 82

DRAFT

ZEELAND CHARTER TOWNSHIP



320 E Main Zeeland, MI 49464
p 616.748.3230

6582 Byron Rd, Zeeland, MI 49464
p 616.772.6701